

RP02930

Leader in Biomolecular Solutions for Life Science



Recombinant Human Insulin Protein

Catalog No.: RP02930

Recombinant

1 Publications

Sequence Information

Species	Gene ID	Swiss Prot
<i>E. coli</i>	3630	P01308

Tags

No tag

Synonyms

IDDM;IDDM1;IDDM2;ILPR;IRDN;MODY10;INS;Insulin;insulin

Product Information

Source	Purification
Yeast	≥ 95 % as determined by SDS-PAGE.

Endotoxin

Please contact us for more information.

Formulation

Lyophilized from a 0.22 µm filtered solution of PBS, pH 7.4. Contact us for customized product form or formulation.

Reconstitution

Centrifuge the vial before opening. Reconstitute to a concentration of 0.1-0.5 mg/mL in sterile distilled water. Avoid vortex or vigorously pipetting the protein. For long term storage, it is recommended to add a carrier protein or stabilizer (e.g. 0.1% BSA, 5% HSA, 10% FBS or 5% Trehalose), and aliquot the reconstituted protein solution to minimize free-thaw cycles.

Contact



www.abclonal.com

Background

INS (Insulin) is a Protein Coding gene. This gene encodes insulin, a peptide hormone that plays a vital role in the regulation of carbohydrate and lipid metabolism. After removal of the precursor signal peptide, proinsulin is post-translationally cleaved into three peptides: the B chain and A chain peptides, which are covalently linked via two disulfide bonds to form insulin, and C-peptide. The binding of insulin to the insulin receptor (INSR) stimulates glucose uptake. Diseases associated with INS include Hyperproinsulinemia and Maturity-Onset Diabetes Of The Young, Type 10. A multitude of mutant alleles with phenotypic effects has been identified, including insulin-dependent diabetes mellitus, permanent neonatal diabetes mellitus, maturity-onset diabetes of the young type 10, and hyperproinsulinemia.

Basic Information

Description

Recombinant Human Insulin Protein is produced by Yeast expression system. The target protein is expressed with sequence ((Phe25-Lys53)AAK(Gly90-Asn110)) of human Insulin (Accession #NP_000198.1) fused with no additional amino acid.

Bio-Activity

Measured in a serum-free cell proliferation assay using MCF-7 human breast cancer cells. The ED₅₀ for this effect is typically 0.2-1 µg/mL.

Shipping

The product is shipped at ambient temperature. Upon receipt, store it immediately at the temperature recommended below.

Operational Notes

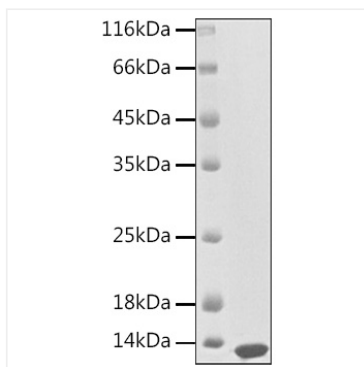
For your safety and health, please wear a lab coat and disposable gloves for handling.

Storage

Store at -20°C. Store the lyophilized protein at -20°C to -80 °C up to 1 year from the date of receipt. After reconstitution, the protein solution is stable at -20°C for 3 months, at 2-8°C for up to 1 week. Avoid repeated freeze/thaw cycles.

* For your safety and health, please wear a lab coat and disposable gloves when handling.

Validation Data



Recombinant Human Insulin Protein was determined by SDS-PAGE under reducing conditions with Coomassie Blue.