

RP02929LQ

Leader in Biomolecular Solutions for Life Science



www.abclonal.com

Recombinant Human Nucleophosmin/NPM1 Protein

Catalog No.: RP02929LQ **Recombinant**

Sequence Information

Species	Gene ID	Swiss Prot
<i>E. coli</i>	4869	P06748

Tags

N-His

Synonyms

B23;NPM;NPM1;Phospho-Nucleophosmin-T199

Product Information

Source	Purification
<i>E. coli</i>	≥ 85 % as determined by SDS-PAGE.

Endotoxin

Please contact us for more information.

Formulation

Supplied as a 0.22 µm filtered solution in 30 mM HEPES, 2 mM EDTA, 0.001 % Tween, 15 % glycerol, pH 7.0.

Reconstitution

Reconstitute to a concentration of 0.1-0.5 mg/mL in sterile distilled water.

Contact



www.abclonal.com

Background

Nucleophosmin 1 (NPM1), also known as nucleolar phosphoprotein B23 or numatrin, is a member of the nucleoplasmin family. Nucleophosmin (NPM) is a nucleolar phosphoprotein that plays multiple roles in ribosome assembly and transport, cytoplasmic-nuclear trafficking, centrosome duplication, and regulation of p53. The NPM1 gene is frequently involved in chromosomal translocation, mutation, and deletion. Mutations of the NPM1 gene leading to the expression of a cytoplasmic mutant protein, NPMc+, are the most frequent genetic abnormalities found in acute myeloid leukemias. Acute myeloid leukemia (AML) with mutated NPM1 have distinct characteristics, including a significant association with a normal karyotype, the involvement of different hematopoietic lineages, a specific gene-expression profile, and clinically, a better response to induction therapy, and a favorable prognosis. Also, NPM1 is a crucial gene to consider in the context of the genetics and biology of cancer. NPM1 is frequently overexpressed, mutated, rearranged, and deleted in human cancer. Traditionally regarded as a tumor marker and a putative proto-oncogene, it has now also been attributed with tumor-suppressor functions.

Basic Information

Description

Recombinant Human Nucleophosmin/NPM1 Protein is produced by *E. coli* expression system. The target protein is expressed with sequence (Glu2-Leu294) of human Nucleophosmin/NPM1 (Accession #NP_002511.1) fused with and a 6×His tag at the N-terminus.

Bio-Activity

Shipping

The product is shipped at ambient temperature. Upon receipt, store it immediately at the temperature recommended below.

Operational Notes

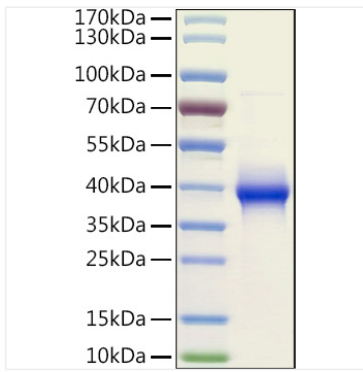
For your safety and health, please wear a lab coat and disposable gloves for handling.

Storage

Store at -70°C. This product is stable at ≤ -70°C for up to 1 year from the date of receipt. For optimal storage, aliquot into smaller quantities after centrifugation and store at recommended temperature. Avoid repeated freeze-thaw cycles. Avoid repeated freeze/thaw cycles.

* For your safety and health, please wear a lab coat and disposable gloves when handling.

Validation Data



Recombinant Human Nucleophosmin/NPM1 Protein was determined by SDS-PAGE under reducing conditions with Coomassie Blue.