

RP02855

Leader in Biomolecular Solutions for Life Science



# Recombinant Human Complement C3 Protein

Catalog No.: RP02855 **Recombinant**

## Sequence Information

Species	Gene ID	Swiss Prot
HEK293 cells	718	P01024

### Tags

C-His

### Synonyms

C3;AHUS5;ARMD9;ASP;C3a;C3b;CPAM D1;HEL-S-62p;complement C3;C3 / C3a

## Product Information

### Source

HEK293 cells

### Purification

≥ 95 % as determined by SDS-PAGE. ≥ 95 % as determined by HPLC.

### Endotoxin

< 1 EU/μg of the protein by LAL method.

### Formulation

Lyophilized from a 0.22 μm filtered solution of PBS, pH 7.4.

### Reconstitution

Centrifuge the tube before opening. Reconstitute to a concentration of 0.1-0.5 mg/mL in sterile distilled water. Avoid vortex or vigorously pipetting the protein. For long term storage, it is recommended to add a carrier protein or stabilizer (e.g. 0.1% BSA, 5% HSA, 10% FBS or 5% Trehalose), and aliquot the reconstituted protein solution to minimize free-thaw cycles.

## Contact



[www.abclonal.com](http://www.abclonal.com)

## Background

C3 is the major complement component serum. It is mainly synthesized by macrophages and liver. C3 plays a central role in the activation of the complement system. Its processing by C3 convertase is the central reaction in both classical and alternative complement pathways. It is cleaved into two fragments, C3a and C3b. C3a anaphylatoxin is a mediator of local inflammatory process. In chronic inflammation, acts as a chemoattractant for neutrophils. After activation C3b can bind covalently, via its reactive thioester, to cell surface carbohydrates or immune aggregates. It induces the contraction of smooth muscle, increases vascular permeability and causes histamine release from mast cells and basophilic leukocytes.

## Basic Information

### Description

Recombinant Human Complement C3 Protein is produced by HEK293 cells expression system. The target protein is expressed with sequence (Ser23-Asn1663) of human Complement C3 (Accession #NP\_000055.2) fused with a 6×His tag at the C-terminus.

### Bio-Activity

### Shipping

The product is shipped at ambient temperature. Upon receipt, store it immediately at the temperature recommended below.

### Operational Notes

For your safety and health, please wear a lab coat and disposable gloves for handling.

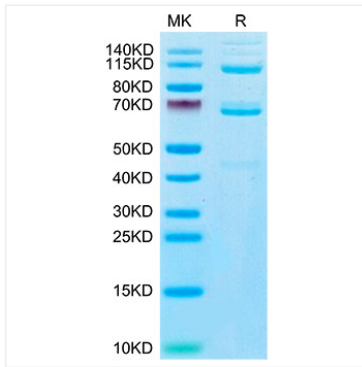
### Storage

Store at -20°C. Store the lyophilized protein at -20°C to -80 °C up to 1 year from the date of receipt. After reconstitution, the protein solution is stable at -20°C for 3 months, at 2-8°C for up to 1 week. Avoid repeated freeze/thaw cycles.

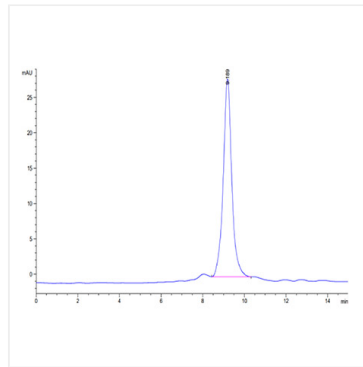
\* For your safety and health, please wear a lab coat and disposable gloves when handling.

## Validation Data

---



Recombinant Human Complement C3 Protein was determined by SDS-PAGE under reducing conditions with Coomassie Blue.



The purity of Mouse CD62L is greater than 95% as determined by SEC-HPLC.