

RP02843

Leader in Biomolecular Solutions for Life Science



# Recombinant Human REG3A Protein

Catalog No.: RP02843 **Recombinant**

## Sequence Information

Species	Gene ID	Swiss Prot
HEK293 Cells	5068	Q06141

### Tags

C-6His

### Synonyms

HIP; PAP; PAP1; REG3; INGAP; PAP-H; PBCGF; HIP/PAP; REG-III;REG3A

## Product Information

Source	Purification
HEK293 Cells	≥ 95 % as determined by SDS-PAGE.

### Endotoxin

< 1 EU/μg of the protein by LAL method.

### Formulation

Lyophilized from a 0.22 μm filtered solution of PBS, pH 7.4.

### Reconstitution

Centrifuge the vial before opening. Reconstitute to a concentration of 0.1-0.5 mg/mL in sterile distilled water. Avoid vortex or vigorously pipetting the protein. For long term storage, it is recommended to add a carrier protein or stabilizer (e.g. 0.1% BSA, 5% HSA, 10% FBS or 5% Trehalose), and aliquot the reconstituted protein solution to minimize free-thaw cycles.

## Contact



[www.abclonal.com](http://www.abclonal.com)

## Background

Regenerating islet-derived protein 3-alpha, also known as Regenerating islet-derived protein III-alpha, REG-3-alpha, REG3A, and HIP, is secreted protein that contains one C-type lectin domain. REG3A is constitutively expressed in intestine, and is a pancreatic secretory protein that may be involved in cell proliferation or differentiation. It is overexpressed during the acute phase of pancreatitis and in some patients with chronic pancreatitis. REG3A and REG1A proteins are both involved in liver and pancreatic regeneration and proliferation. REG3A is also a stress protein involved in the control of bacterial proliferation. REG3A is down-regulated in most primary human gastric cancer cells, and might be useful in the diagnosis of gastric cancer. Additionally, REG3A is a target of beta-catenin signaling in Huh7 hepatoma cells. The REG1A and REG3A are downstream targets of the Wnt pathway during liver tumorigenesis.

## Basic Information

### Description

Recombinant Human REG3A Protein is produced by HEK293 Cells expression system. The target protein is expressed with sequence (Glu27-Asp175) of human REG3A (Accession #NP\_002571.1) fused with a 6×His tag at the C-terminus.

### Bio-Activity

### Shipping

The product is shipped at ambient temperature. Upon receipt, store it immediately at the temperature recommended below.

### Operational Notes

For your safety and health, please wear a lab coat and disposable gloves for handling.

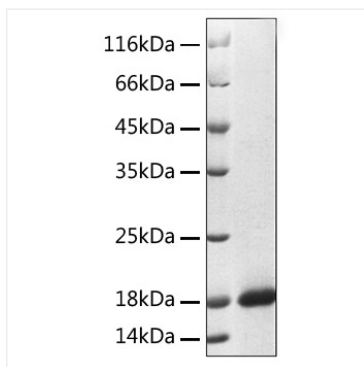
### Storage

Store at -20°C. Store the lyophilized protein at -20°C to -80 °C up to 1 year from the date of receipt. After reconstitution, the protein solution is stable at -20°C for 3 months, at 2-8°C for up to 1 week. Avoid repeated freeze/thaw cycles.

\* For your safety and health, please wear a lab coat and disposable gloves when handling.

## Validation Data

---



Recombinant Human REG3A Protein was determined by SDS-PAGE under reducing conditions with Coomassie Blue.