

RP02780

Leader in Biomolecular Solutions for Life Science



Recombinant Human MS4A1/CD20 Protein

Catalog No.: RP02780

Recombinant

Sequence Information

Species	Gene ID	Swiss Prot
HEK293 cells	931	P11836

Tags

No tag

Synonyms

MS4A1; CD20; MS4A-1; B1; Bp35;
CD20 receptor; CD20S7; CVID5;
LEU-16; Ly-44; MS4A2; S7

Product Information

Source	Purification
HEK293 cells	> 95% as determined by HPLC

Endotoxin

<1EU/μg

Formulation

Lyophilized from a 0.22 μm filtered solution of PBS, pH 7.4.

Reconstitution

Centrifuge the tube before opening. Reconstitute to a concentration of 0.1-0.5 mg/mL in sterile distilled water. Avoid vortex or vigorously pipetting the protein. For long term storage, it is recommended to add a carrier protein or stabilizer (e.g. 0.1% BSA, 5% HSA, 10% FBS or 5% Trehalose), and aliquot the reconstituted protein solution to minimize free-thaw cycles.

Background

B-lymphocyte antigen CD20 or CD20 is an activated-glycosylated phosphoprotein expressed on the surface of all B-cells beginning at the pro-B phase (CD45R, CD117) and progressively increasing in concentration until maturity. CD20 is the target of the monoclonal antibodies rituximab, ocrelizumab, obinutuzumab, ofatumumab, ibritumomab tiuxetan, tositumomab, and ublituximab, which are all active agents in the treatment of all B cell lymphomas, leukemias, and B cell-mediated autoimmune diseases.

Basic Information

Description

Recombinant Human MS4A1/CD20 Protein is produced by HEK293 cells expression system. The target protein is expressed with sequence (Met1-Pro297) of human CD20 (Accession #NP_068769.2) fused with no additional amino acid.

Bio-Activity

1. Immobilized Human CD20 VLP at 5μg/ml (100μl/Well) on plate on the plate. Dose response curve for Ofatumumab, hFc Tag with the EC₅₀ of 10.1ng/ml determined by ELISA. 2. Immobilized Human CD20 VLP at 5μg/ml (100μl/Well) on plate on the plate. Dose response curve for Rituximab, hFc Tag with the EC₅₀ of 28.9ng/ml determined by ELISA.

Storage

Store at -20°C. Store the lyophilized protein at -20°C to -80 °C up to 1 year from the date of receipt. After reconstitution, the protein solution is stable at -20°C for 3 months, at 2-8°C for up to 1 week. Avoid repeated freeze/thaw cycles.

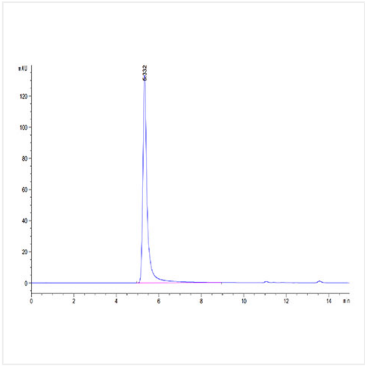
Contact



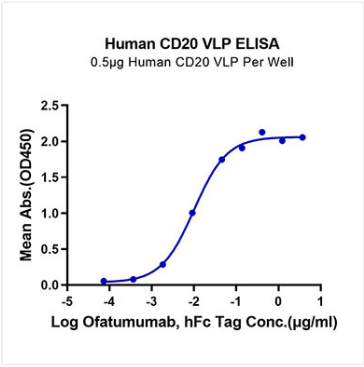
www.abclonal.com

* For your safety and health, please wear a lab coat and disposable gloves when handling.

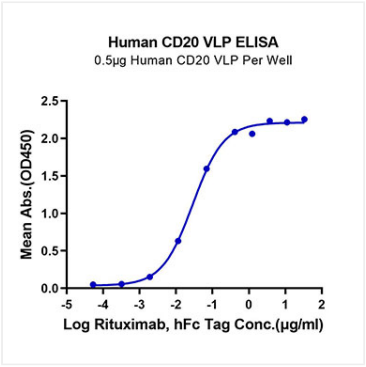
Validation Data



The purity of Human MS4A1 is greater than 95% as determined by SEC-HPLC.



Immobilized Human CD20 VLP at 5µg/ml (100µl/Well) on plate on the plate. Dose response curve for Ofatumumab, hFc Tag with the EC₅₀ of 10.1ng/ml determined by ELISA.



Immobilized Human CD20 VLP at 5µg/ml (100µl/Well) on plate on the plate. Dose response curve for Rituximab, hFc Tag with the EC₅₀ of 28.9ng/ml determined by ELISA.