

RP02723

Leader in Biomolecular Solutions for Life Science



www.abclonal.com

Recombinant Human CLEC2D Protein

Catalog No.: RP02723 **Recombinant**

Sequence Information

Species	Gene ID	Swiss Prot
HEK293 cells	29121	Q9UHP7-1

Tags

N-hFc-Avi

Synonyms

C-type lectin domain family 2 member D ; Lectin-like NK cell receptor ; Lectin-like transcript 1 ; LLT-1 ; CLAX ; LLT1 ; OCIL ; CLEC2D

Product Information

Source	Purification
HEK293 cells	≥ 95 % as determined by Tris-Bis PAGE; ≥ 95 % as determined by HPLC.

Endotoxin

< 1 EU/μg of the protein by LAL method.

Formulation

Reconstitution

Centrifuge the tube before opening. Reconstitute to a concentration of 0.1-0.5 mg/mL in sterile distilled water. Avoid vortex or vigorously pipetting the protein. For long term storage, it is recommended to add a carrier protein or stabilizer (e.g. 0.1% BSA, 5% HSA, 10% FBS or 5% Trehalose), and aliquot the reconstituted protein solution to minimize free-thaw cycles.

Contact



www.abclonal.com

Background

C-type lectin domain family 2, member D (CLEC2D) is implicated in the immune response. Pre-eclampsia and HIV infection have opposing immune responses. The contrasting expression of CLEC2D in HIV infection and pre-eclampsia is demonstrative of the immunosuppressive and pro-inflammatory roles of the respective pathologies. However, this implication may be confounded by highly active anti-retroviral treatment (HAART).

Basic Information

Description

Recombinant Human CLEC2D Protein is expressed from Expi293 with hFc tag and Avi tag at the N-terminal. ; It contains Arg60-Val191.

Bio-Activity

Shipping

The product is shipped at ambient temperature. Upon receipt, store it immediately at the temperature recommended below.

Operational Notes

For your safety and health, please wear a lab coat and disposable gloves for handling.

Storage

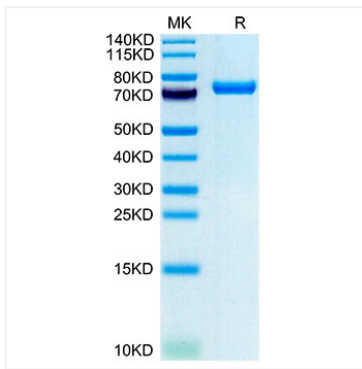
Store at -20°C. Store the lyophilized protein at -20°C to -80 °C up to 1 year from the date of receipt.

After reconstitution, the protein solution is stable at -20°C for 3 months, at 2-8°C for up to 1 week.

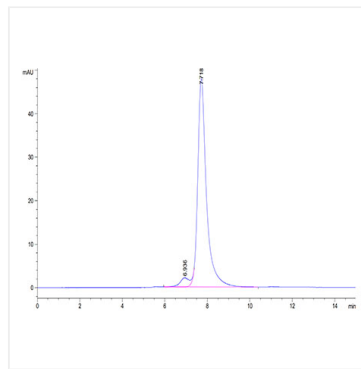
Avoid repeated freeze/thaw cycles.

* For your safety and health, please wear a lab coat and disposable gloves when handling.

Validation Data



Recombinant Human CLEC2D Protein was determined by Tris-Bis PAGE under reducing conditions.



The purity of Human CLEC2D is greater than 95% as determined by SEC-HPLC.