

RP02704

Leader in Biomolecular Solutions for Life Science



# Recombinant Human KIR2DL5/CD158f1 Protein

Catalog No.: RP02704 **Recombinant**

## Sequence Information

Species	Gene ID	Swiss Prot
HEK293 cells	57292	NP_065396

### Tags

C-His&Avi

### Synonyms

KIR2DL5A; CD158F; CD158F1; KIR2DL5;  
KIR2DL5.1; KIR2DL5.3; KIR2DL5A;  
KIR2DL5B

## Product Information

Source	Purification
HEK293 cells	≥ 95 % as determined by Tris-Bis PAGE.

### Endotoxin

< 1 EU/μg of the protein by LAL method.

### Formulation

#### Reconstitution

Centrifuge the tube before opening. Reconstitute to a concentration of 0.1-0.5 mg/mL in sterile distilled water. Avoid vortex or vigorously pipetting the protein. For long term storage, it is recommended to add a carrier protein or stabilizer (e.g. 0.1% BSA, 5% HSA, 10% FBS or 5% Trehalose), and aliquot the reconstituted protein solution to minimize free-thaw cycles.

## Contact



[www.abclonal.com](http://www.abclonal.com)

## Background

A recently developed anti-KIR2DL5 (CD158f) antibody has demonstrated KIR2DL5 expression on the surface of NK and T lymphocytes, making it the last functional KIR identified in the human genome. KIR2DL5 belongs to an ancestral lineage of KIR with Ig-like domains of the D0-D2 type, of which KIR2DL4, an HLA-G receptor, is the only other human member.

## Basic Information

### Description

Recombinant Human KIR2DL5/CD158f1 Protein is produced by Expi293 cells expression system. The target protein is expressed with sequence (His22-His240) of Human KIR2DL5/CD158f1 (Accession #NP\_065396) fused with His tag and Avi tag at the C-terminus.

### Bio-Activity

### Shipping

The product is shipped at ambient temperature. Upon receipt, store it immediately at the temperature recommended below.

### Operational Notes

For your safety and health, please wear a lab coat and disposable gloves for handling.

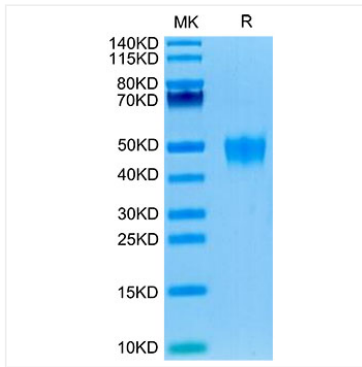
### Storage

Store at -20°C. Store the lyophilized protein at -20°C to -80 °C up to 1 year from the date of receipt. After reconstitution, the protein solution is stable at -20°C for 3 months, at 2-8°C for up to 1 week. Avoid repeated freeze/thaw cycles.

\* For your safety and health, please wear a lab coat and disposable gloves when handling.

## Validation Data

---



Recombinant Human  
KIR2DL5/CD158f1 Protein was  
determined by Tris-Bis PAGE under  
reducing conditions.