

RP02701

Leader in Biomolecular Solutions for Life Science



# Recombinant Human KRAS WT(HLA-A\*03:01) Protein

Catalog No.: RP02701

Recombinant

## Sequence Information

Species	Gene ID	Swiss Prot
HEK293 cells	3105 & 567	NP_002107.3(HLA-A*03:01)&P61769(B2M)&VVGAGGVGK

### Tags

C-His&Avi

### Synonyms

MHC; KRAS; K-Ras 2; KRAS2; C-K-RAS; CFC2; K-RAS2A; K-RAS2B; K-RAS4A; K-RAS4B; KRAS1; KRAS2; NS; NS3; RASK2; GTPase Kras; KI-RAS; RALD

## Product Information

Source	Purification
HEK293 cells	> 95% as determined by Tris-Bis PAGE ; > 95% as determined by HPLC

### Endotoxin

Less than 1EU per µg by the LAL method.

### Formulation

### Reconstitution

Centrifuge the tube before opening. Reconstitute to a concentration of 0.1-0.5 mg/mL in sterile distilled water. Avoid vortex or vigorously pipetting the protein. For long term storage, it is recommended to add a carrier protein or stabilizer (e.g. 0.1% BSA, 5% HSA, 10% FBS or 5% Trehalose), and aliquot the reconstituted protein solution to minimize free-thaw cycles.

## Background

Kirsten rat sarcoma 2 viral oncogene homolog (KRAS) is the most commonly mutated oncogene in human cancer. The developments of many cancers depend on sustained expression and signaling of KRAS, which makes KRAS a high-priority therapeutic target.

## Basic Information

### Description

Recombinant Human KRAS WT(HLA-A\*03:01) Protein is expressed from Expi293 with His tag and Avi tag at the C-terminal. ; It contains Gly25-Thr305(HLA-A\*03:01), Ile21-Met119(B2M) and VVGAGGVGK peptide.

### Bio-Activity

### Storage

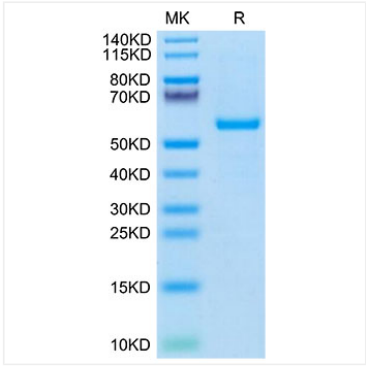
Store at -20°C. Store the lyophilized protein at -20°C to -80 °C up to 1 year from the date of receipt. After reconstitution, the protein solution is stable at -20°C for 3 months, at 2-8°C for up to 1 week. Avoid repeated freeze/thaw cycles.

## Contact

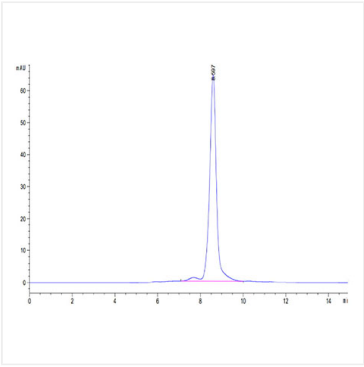


[www.abclonal.com](http://www.abclonal.com)

Validation Data



Human KRAS WT (HLA-A\*03:01) on Tris-Bis PAGE under reduced condition. The purity is greater than 95%.



The purity of Human KRAS WT (HLA-A\*03:01) is greater than 95% as determined by SEC-HPLC.