

RP02686

Leader in Biomolecular Solutions for Life Science



Recombinant Human GP100 (HLA-A*02:01) Complex Protein

Catalog No.: RP02686

Recombinant

Sequence Information

Species	Gene ID	Swiss Prot
HEK293 cells		A0A140T913 (HLA-A*02:01)&P6 1769(B2M)& YLEPGPVT A

Tags

C-His&Avi

Synonyms

HLA0201; MHC I; gp100; Glycoprotein 100; ME20-M; P100

Product Information

Source	Purification
HEK293 cells	≥ 95 % as determined by Tris-Bis PAGE; ≥ 95 % as determined by HPLC.

Endotoxin

< 1 EU/μg of the protein by LAL method.

Formulation

Reconstitution

Centrifuge the tube before opening. Reconstitute to a concentration of 0.1-0.5 mg/mL in sterile distilled water. Avoid vortex or vigorously pipetting the protein. For long term storage, it is recommended to add a carrier protein or stabilizer (e.g. 0.1% BSA, 5% HSA, 10% FBS or 5% Trehalose), and aliquot the reconstituted protein solution to minimize free-thaw cycles.

Contact



www.abclonal.com

Background

Glycoprotein 100, gp100 or Melanocyte protein PMEL is 661 amino acids long and is a type I transmembrane glycoprotein enriched in melanosomes, which are the melanin-producing organelles in melanocytes. This protein is involved in melanosome maturation. The Human HLA-A*0201 gp100 (YLEPGPVT A) complex Protein is a complex of HLA-A*0201 of the MHC Class I, B2M and YLEPGPVT A peptide of the gp100.

Basic Information

Description

Recombinant Human GP100 (HLA-A*02:01) Complex Protein is expressed from Expi293 with His tag and Avi tag at the C-terminal. ; It contains Gly25-Thr305(HLA-A*02:01),Ile21-Met119(B2M) and YLEPGPVT A peptide.

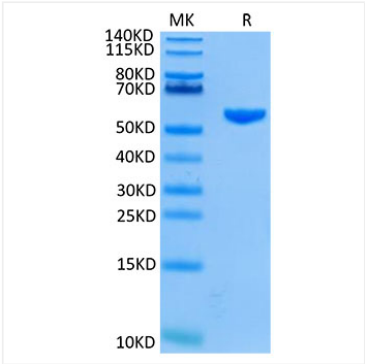
Bio-Activity

Storage

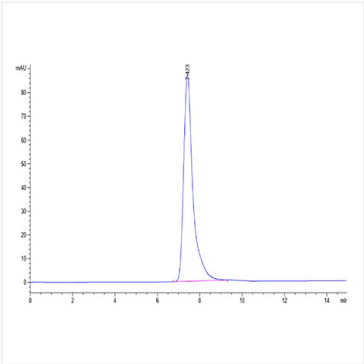
Store at -20°C. Store the lyophilized protein at -20°C to -80 °C up to 1 year from the date of receipt. After reconstitution, the protein solution is stable at -20°C for 3 months, at 2-8°C for up to 1 week. Avoid repeated freeze/thaw cycles.

* For your safety and health, please wear a lab coat and disposable gloves when handling.

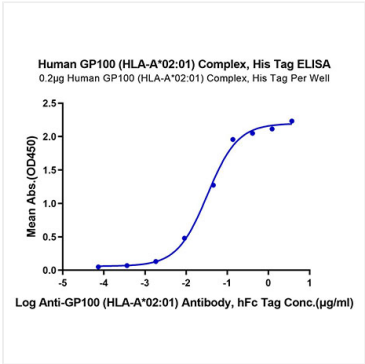
Validation Data



Recombinant Human GP100 (HLA-A*02:01) Complex Protein was determined by Tris-Bis PAGE under reducing conditions.



The purity of Human GP100 (HLA-A*02:01) was greater than 95% as determined by SEC-HPLC.



Immobilized Human GP100 (HLA-A*02:01) , His Tag at 2µg/ml (100µl/Well) on the plate. Dose response curve for Anti-GP100 (HLA-A*02:01) Antibody, hFc Tag with the EC₅₀ of 32.9ng/ml determined by ELISA.