

RP02658

Leader in Biomolecular Solutions for Life Science



Recombinant Human GIP Protein

Catalog No.: RP02658

Recombinant

Sequence Information

Species	Gene ID	Swiss Prot
HEK293 cells	2695	P09681

Tags

C-His

Synonyms

GIP; Incretin

Product Information

Source

Purification

> 95% as determined by Tris-Bis PAGE ; > 95% as determined by HPLC

Endotoxin

Less than 1EU per µg by the LAL method.

Formulation

Reconstitution

Centrifuge the tube before opening.
Reconstitute to a concentration of 0.1-0.5 mg/mL in sterile distilled water.
Avoid vortex or vigorously pipetting the protein. For long term storage, it is recommended to add a carrier protein or stabilizer (e.g. 0.1% BSA, 5% HSA, 10% FBS or 5% Trehalose), and aliquot the reconstituted protein solution to minimize free-thaw cycles.

Contact



www.abclonal.com

Background

The potential application of glucose-dependent insulinotropic polypeptide (gastric inhibitory polypeptide, GIP) in the management of obesity and type 2 diabetes has been controversial. Initial interest in the therapeutic use of GIP was dampened by evidence that its insulinotropic activity was reduced in type 2 diabetes and by reports that it increased glucagon secretion and adipose deposition in non-diabetic individuals.

Basic Information

Description

Recombinant Human GIP Protein is expressed from Expi293 with His tag at the C-terminal. ; It contains Glu22-Gln93.

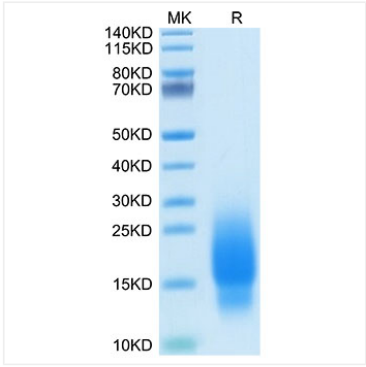
Bio-Activity

Storage

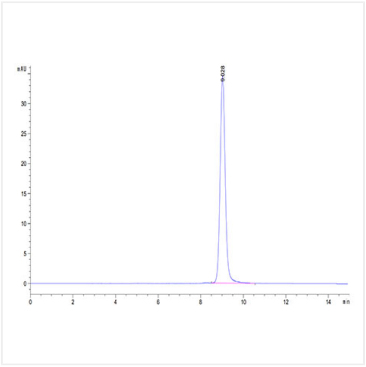
Store the lyophilized protein at -20°C to -80°C for long term.
After reconstitution, the protein solution is stable at -20°C for 3 months, at 2-8°C for up to 1 week.
Avoid repeated freeze/thaw cycles.

* For your safety and health, please wear a lab coat and disposable gloves when handling.

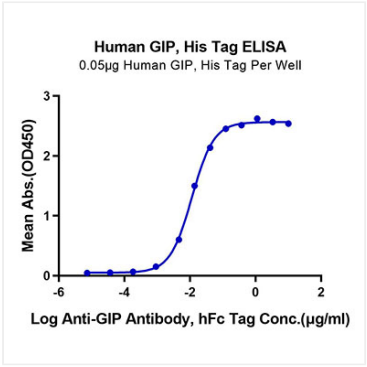
Validation Data



Human GIP on Tris-Bis PAGE under reduced condition. The purity is greater than 95%.



The purity of Human GIP is greater than 95% as determined by SEC-HPLC.



Immobilized Human GIP, His Tag at 0.5µg/ml (100µl/Well) on the plate. Dose response curve for Anti-GIP Antibody, hFc Tag with the EC₅₀ of 11.4ng/ml determined by ELISA.