

RP02560

Leader in Biomolecular Solutions for Life Science



Biotinylated Recombinant Human LILRB2/ILT-4/CD85d Protein

Catalog No.: RP02560

Recombinant

Sequence Information

Species	Gene ID	Swiss Prot
HEK293 cells		Q8N423-1

Tags

C-His&Avi

Synonyms

CD85d; ILT4; ILT-4; ILT4CD85d; LILRB2;
LIR2; MIR10

Product Information

Source	Purification
HEK293 cells	≥ 95 % as determined by Tris-Bis PAGE; ≥ 95 % as determined by HPLC.

Endotoxin

< 1 EU/μg of the protein by LAL method.

Formulation

Reconstitution

Centrifuge the tube before opening. Reconstitute to a concentration of 0.1-0.5 mg/mL in sterile distilled water. Avoid vortex or vigorously pipetting the protein. For long term storage, it is recommended to add a carrier protein or stabilizer (e.g. 0.1% BSA, 5% HSA, 10% FBS or 5% Trehalose), and aliquot the reconstituted protein solution to minimize free-thaw cycles.

Contact



www.abclonal.com

Background

The immunoglobulin-like transcript (ILT) comprise a family of activating and inhibitory type immunoreceptors whose genes are located in the same locus that encodes killer cell Ig-like receptors (KIR). ILT4, also known as LIR-2 and LILRB2, is a type I transmembrane protein expressed primarily on monocytes and dendritic cells (DC). LILRB2 is a receptor for class I MHC antigens. Recognizes a broad spectrum of HLA-A, HLA-B, HLA-C, HLA-G and HLA-F alleles.

Basic Information

Description

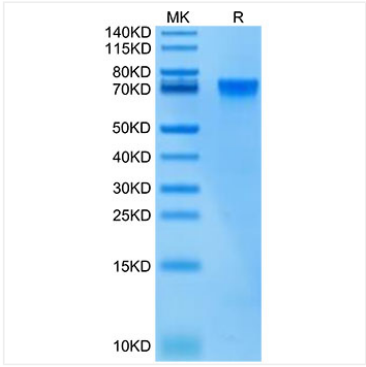
Recombinant Biotinylated Human LILRB2/CD85d/ILT4 Protein is expressed from Expi293 with His tag and Avi tag at the C-terminal. ; It contains Gln22-His458.

Bio-Activity

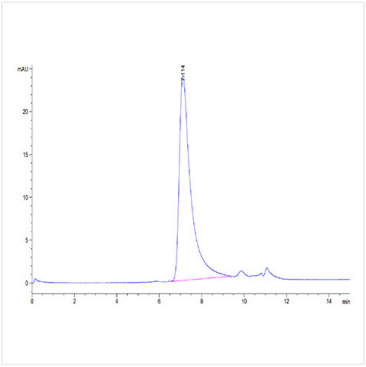
Storage

Store at -20°C. Store the lyophilized protein at -20°C to -80 °C up to 1 year from the date of receipt. After reconstitution, the protein solution is stable at -20°C for 3 months, at 2-8°C for up to 1 week. Avoid repeated freeze/thaw cycles.

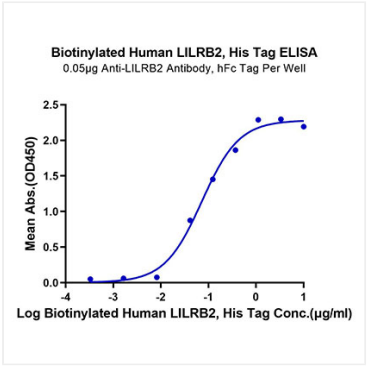
Validation Data



Biotinylated Recombinant Human LILRB2/ILT-4/CD85d Protein was determined by Tris-Bis PAGE under reducing conditions.



The purity of Biotinylated Human LILRB2 is greater than 95% as determined by SEC-HPLC.



Immobilized Anti-LILRB2 Antibody, hFc Tag at 0.5μg/ml (100μl/well) on the plate. Dose response curve for Biotinylated Human LILRB2, His Tag with the EC₅₀ of 72.6ng/ml determined by ELISA.