

RP02516

Leader in Biomolecular Solutions for Life Science



Recombinant Human/Mouse/Rat Inhibin beta A chain/INHBA Protein

Catalog No.: RP02516

Recombinant

Sequence Information

Species	Gene ID	Swiss Prot
<I>E. coli</I>	3624	P08476

Tags

C-His

Synonyms

EDF; FRP;INHBA;FRP

Product Information

Source	Purification
<I>E. coli</I>	> 95% by SDS-PAGE.

Endotoxin

<0.1EU/μg

Formulation

Lyophilized from a 0.22 μm filtered solution of 0.1% sarkosyl in 1X PBS, pH 8.0.

Reconstitution

Centrifuge the vial before opening. Reconstitute to a concentration of 0.1-0.5 mg/mL in sterile distilled water. Avoid vortex or vigorously pipetting the protein. For long term storage, it is recommended to add a carrier protein or stabilizer (e.g. 0.1% BSA, 5% HSA, 10% FBS or 5% Trehalose), and aliquot the reconstituted protein solution to minimize free-thaw cycles.

Background

Activin and Inhibin are members of the TGF-beta superfamily of cytokines and are involved in a wide range of biological processes including tissue morphogenesis and repair, fibrosis, inflammation, neural development, hematopoiesis, reproductive system function, and carcinogenesis. Activin is strongly expressed in wounded skin, and overexpression of activin in epidermis of transgenic mice improves wound healing and enhances scar formation. Activin also regulates the morphogenesis of branching organs such as the prostate, lung, and kidney. There is also evidence showed that lack of activin during development results in neural developmental defects.

Basic Information

Description

Recombinant Human/Mouse/Rat Inhibin beta A chain/INHBA Protein is produced by *E. coli* expression system. The target protein is expressed with sequence of Human/Mouse/Rat Inhibin beta A chain/INHBA (Accession #) fused with polyhistidine tag at the C-terminus

Bio-Activity

Storage

Store at -20°C. Store the lyophilized protein at -20°C to -80 °C up to 1 year from the date of receipt.

After reconstitution, the protein solution is stable at -20°C for 3 months, at 2-8°C for up to 1 week.

Avoid repeated freeze/thaw cycles.

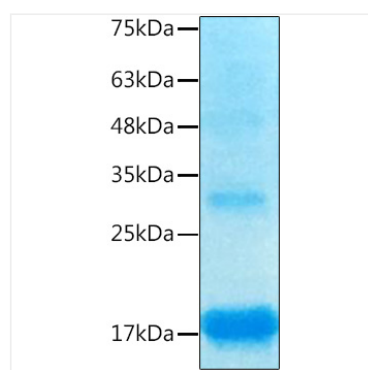
Contact



www.abclonal.com

* For your safety and health, please wear a lab coat and disposable gloves when handling.

Validation Data



Recombinant Human Inhibin beta A/Activin A Protein was determined by SDS-PAGE with Coomassie Blue, showing bands at 17 kDa.