

RP02514

Leader in Biomolecular Solutions for Life Science



Recombinant Human Mature TGF-beta 1 Protein

Catalog No.: RP02514 **Recombinant**

Sequence Information

Species	Gene ID	Swiss Prot
<I>E. coli</I>	7040	P01137

Tags

C-His

Synonyms

TGFB1; CED; DPD1; LAP; TGFB;
TGFBeta; transforming growth factor
beta-1;TGF-beta
1;CED;DPD1;LAP;TGFB;TGFBeta;TGF-β

Product Information

Source	Purification
<I>E. coli</I>	> 98% by SDS-PAGE.

Endotoxin

<0.1EU/μg

Formulation

Lyophilized from a 0.22 μm filtered solution of PBS, pH 8.0.

Reconstitution

Reconstitute to a concentration of 0.1-0.5 mg/mL in sterile distilled water.

Background

Transforming growth factor beta 1 or TGF-β1 is a polypeptide member of the transforming growth factor beta superfamily of cytokines. It is a secreted protein that performs many cellular functions, including the control of cell growth, cell proliferation, cell differentiation, and apoptosis. In humans, TGF-β1 is encoded by the TGFB1 gene.

Basic Information

Description

Recombinant Human Mature TGF-beta 1 Protein is produced by *E. coli* expression system. The target protein is expressed with sequence of Human Mature TGF-beta 1 (Accession #) fused with polyhistidine tag at the C-terminus

Bio-Activity

Measured by its ability to inhibit the IL-4 dependent proliferation in HT-2 cells. The ED₅₀ for this effect is <0.1 ng/mL. |The specific activity of recombinant human TGF beta 1 is approximately >5 x 10⁷ IU/mg. |Measured by its ability to inhibit proliferation in MCF-7 cells The ED₅₀ for this effect is <3.2 ng/mL.

Storage

Store at -20°C. Store the lyophilized protein at -20°C to -80 °C up to 1 year from the date of receipt.
After reconstitution, the protein solution is stable at -20°C for 3 months, at 2-8°C for up to 1 week.
Avoid repeated freeze/thaw cycles.

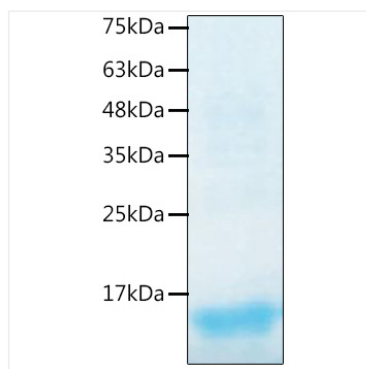
Contact



www.abclonal.com

* For your safety and health, please wear a lab coat and disposable gloves when handling.

Validation Data



Recombinant Human TGF-beta 1
Protein was determined by SDS-
PAGE with Coomassie Blue, showing
bands at 15 kDa.