

RP02393

Leader in Biomolecular Solutions for Life Science



# Recombinant Human IL-13 Protein

Catalog No.: RP02393

Recombinant

## Sequence Information

Species	Gene ID	Swiss Prot
Human	3596	AAK53823(P35225)

### Tags

N-His&Avi

### Synonyms

IL13;IL-13;P600

## Product Information

### Source

HEK293 cells

### Purification

> 95% by Tris-Bis PAGE; > 95% by SEC-HPLC

### Endotoxin

< 1 EU/μg of the protein by LAL method.

### Formulation

Lyophilized from a 0.22 μm filtered solution of PBS, pH 7.4.

### Reconstitution

Reconstitute to a concentration of 0.1-0.5 mg/mL in sterile distilled water.

## Background

## Basic Information

### Description

Recombinant Human IL13 Protein is produced by Expi293 expression system. The target protein is expressed with sequence (Gly21-Asn132) of Human IL13 fused with a His tag and Avi at the N-terminal.

### Bio-Activity

Immobilized Human IL-13 at 1 μg/mL (100 μL/Well). Dose response curve for IL13Ra1 with the EC<sub>50</sub> of 2.7 μg/mL determined by ELISA.

### Storage

Store the lyophilized protein at -20°C to -80°C for long term. After reconstitution, the protein solution is stable at -20°C for 3 months, at 2-8°C for up to 1 week.

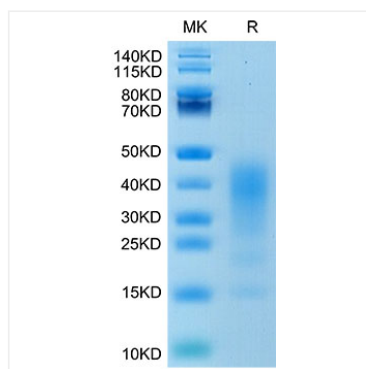
Avoid repeated freeze/thaw cycles.

## Contact

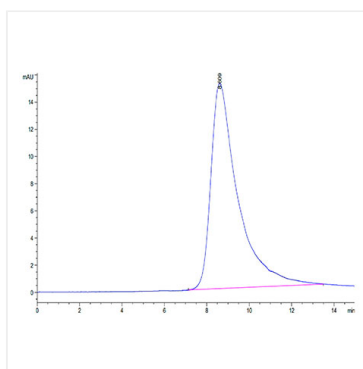


[www.abclonal.com](http://www.abclonal.com)

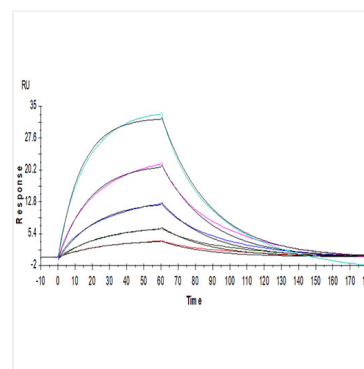
## Validation Data



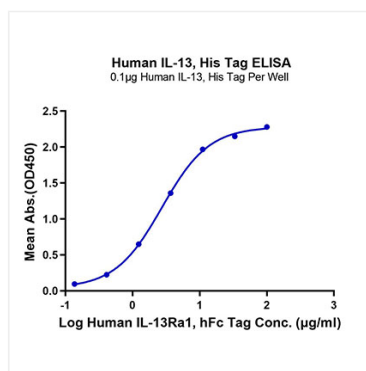
Human IL-13 on Tris-Bis PAGE under reduced condition. The purity is greater than 95%.



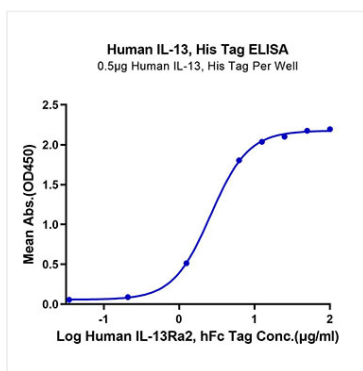
The purity of Human IL-13 is greater than 95% as determined by SEC-HPLC.



Human IL-13, His Tag immobilized on CM5 Chip can bind Human IL-13Ra1, hFc Tag with an affinity constant of  $0.7\mu\text{M}$  as determined in a SPR assay (Biacore T200).



Immobilized Human IL-13, His Tag at  $1\mu\text{g/ml}$  ( $100\mu\text{l/Well}$ ). Dose response curve for Human IL-13Ra1, hFc Tag with the  $\text{EC}_{50}$  of  $2.7\mu\text{g/ml}$  determined by ELISA.



Immobilized Human IL-13, His Tag at  $5\mu\text{g/ml}$  ( $100\mu\text{l/well}$ ) on the plate. Dose response curve for Human IL-13Ra2, hFc Tag with the  $\text{EC}_{50}$  of  $2.6\mu\text{g/ml}$  determined by ELISA.