

RP02242

Leader in Biomolecular Solutions for Life Science



# Recombinant Human SLAMF1/CD150 Protein

Catalog No.: RP02242

Recombinant

## Sequence Information

Species	Gene ID	Swiss Prot
HEK293 cells	6504	Q13291

### Tags

C-mFc&His

### Synonyms

SLAMF1;CD150;CDw150;SLAM

## Product Information

Source	Purification
HEK293 cells	> 95% by SDS-PAGE.

### Endotoxin

### Formulation

Lyophilized from sterile PBS, pH 7.4. Normally 5 % - 31 % trehalose is added as protectants before lyophilization.

### Reconstitution

Reconstitute with deionized water

## Background

SLAMF1 (Signaling Lymphocytic Activation Molecule Family Member 1) is a Protein Coding gene. Diseases associated with SLAMF1 include Measles and Subacute Sclerosing Panencephalitis. Among its related pathways are Dendritic Cells Developmental Lineage Pathway and T Cell Co-Signaling Pathway: Ligand-Receptor Interactions. Gene Ontology (GO) annotations related to this gene include antigen binding. An important paralog of this gene is LY9.

## Basic Information

### Description

Recombinant Human SLAMF1/CD150 Protein is produced by HEK293 cells expression system. The target protein is expressed with sequence (SLAMF1(Ala21-Pro231)&mFc(Pro99-Lys330)) of human SLAMF1 (Accession #) fused with a Fc and His Tag at the C-terminal. .

### Bio-Activity

### Storage

Store the lyophilized protein at -20°C to -80°C for long term. After reconstitution, the protein solution is stable at -20°C for 3 months, at 2-8°C for up to 1 week. Avoid repeated freeze/thaw cycles.

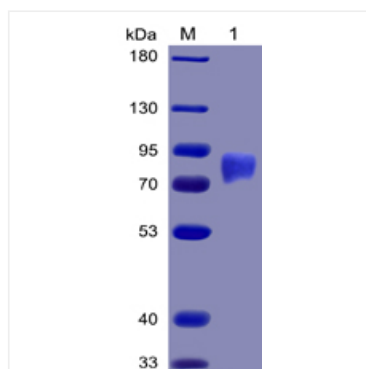
## Contact



[www.abclonal.com](http://www.abclonal.com)

## Validation Data

---



Recombinant Human SLAMF1/CD150  
Protein was determined by SDS-  
PAGE with Coomassie Blue, showing  
bands at 51.8 kDa