

RP02161

Leader in Biomolecular Solutions for Life Science



Recombinant Human CLM-9/CD300g Protein

Catalog No.: RP02161

Recombinant

Sequence Information

Species	Gene ID	Swiss Prot
HEK293 cells	146894	Q6UXG3

Tags

C-His

Synonyms

CLM-9;CLM9;NEPMUCIN;TREM-4;TRE
M4;CD300LG

Product Information

Source	Purification
HEK293 cells	> 95% by SDS- PAGE.

Endotoxin

< 1 EU/μg of the protein by LAL
method.

Formulation

Lyophilized from a 0.2 μm filtered
solution of 20mM PB, 150mM NaCl,
pH 7.2. Contact us for customized
product form or formulation.

Reconstitution

Centrifuge the tube before opening.
Reconstitute to a concentration of
0.1-0.5 mg/mL in sterile distilled water.
Avoid vortex or vigorously pipetting
the protein. For long term storage, it is
recommended to add a carrier protein
or stabilizer (e.g. 0.1% BSA, 5% HSA,
10% FBS or 5% Trehalose), and aliquot
the reconstituted protein solution to
minimize free-thaw cycles.

Background

CMRF35-Like Molecule 9 (CD300LG) is a single-pass type I membrane protein which belongs to the CD300 family. CD300LG has one Ig-like V-type domain which mediates binding to lymphocyte. CD300LG is highly expressed in heart, skeletal muscle and placenta. CD300LG acts as a receptor which may mediate L-selectin-dependent lymphocyte rollings. CD300LG also binds SELL in a calcium dependent manner and lymphocyte. CD300LG may play a important role in molecular traffic across the capillary endothelium.

Basic Information

Description

Recombinant Human CLM-9/CD300g Protein is produced by Mammalian expression system. The target protein is expressed with sequence (Leu19-Arg247) of human CLM9 (Accession #Q6UXG3) fused with a 6xHis tag at the C- terminus.

Bio-Activity

Storage

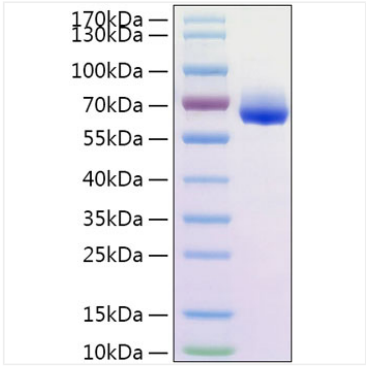
Store at -20°C. Store the lyophilized protein at -20°C to -80 °C up to 1 year from the date of receipt. After reconstitution, the protein solution is stable at -20°C for 3 months, at 2-8°C for up to 1 week.
Avoid repeated freeze/thaw cycles.

Contact



www.abclonal.com

Validation Data



Recombinant Human CLM-9/CD300g Protein was determined by SDS-PAGE with Coomassie Blue, showing a band at 64kDa.