

RP02115

Leader in Biomolecular Solutions for Life Science



Recombinant Mouse CD163 Protein

Catalog No.: RP02115

Recombinant

1 Publications

Sequence Information

Species	Gene ID	Swiss Prot
HEK293 cells	93671	Q2VLH6-1

Tags

C-His

Synonyms

M130; CD163 molecule; CD163;
GHI/61; HbSR; MM130; SCAR11;
sCD163

Product Information

Source	Purification
HEK293 cells	≥ 95 % as determined by SDS-PAGE.

Endotoxin

< 0.1 EU/μg of the protein by LAL
method.

Formulation

Lyophilized from a 0.22 μm filtered
solution of PBS, pH 7.4.

Reconstitution

Centrifuge the tube before opening.
Reconstitute to a concentration of
0.1-0.5 mg/mL in sterile distilled water.
Avoid vortex or vigorously pipetting
the protein. For long term storage, it is
recommended to add a carrier protein
or stabilizer (e.g. 0.1% BSA, 5% HSA,
10% FBS or 5% Trehalose), and aliquot
the reconstituted protein solution to
minimize free-thaw cycles.

Background

The hemoglobin (Hb) scavenger receptor, CD163, is a macrophage-specific protein and the upregulated expression of this receptor is one of the major changes in the macrophage switch to alternative activated phenotypes in inflammation. Accordingly, a high CD163 expression in macrophages is a characteristic of tissues responding to inflammation.

Basic Information

Description

Recombinant Mouse CD163 Protein is produced by HEK293 cells expression system. The target protein is expressed with sequence (Met1-Thr1045) of mouse CD163 (Accession #NP_444324.2) fused with 8×His tag at the C-terminus.

Bio-Activity

Storage

Store at -20°C. Store the lyophilized protein at -20°C to -80 °C up to 1 year from the date of receipt.

After reconstitution, the protein solution is stable at -20°C for 3 months, at 2-8°C for up to 1 week.

Avoid repeated freeze/thaw cycles.

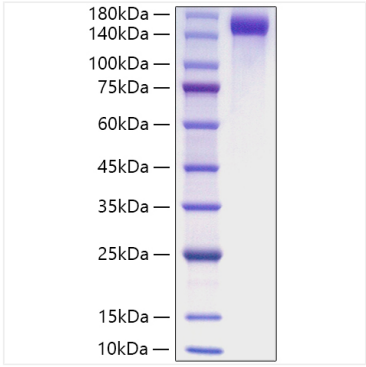
Contact



www.abclonal.com

* For your safety and health, please wear a lab coat and disposable gloves when handling.

Validation Data



Recombinant Mouse CD163 Protein was determined by SDS-PAGE under reducing conditions with Coomassie Blue.