

RP02102LQ

Leader in Biomolecular Solutions for Life Science



# Recombinant Human Claudin 18.2 Protein

Catalog No.: RP02102LQ **Recombinant**

## Sequence Information

Species	Gene ID	Swiss Prot
HEK293 cells		P56856

### Tags

C-His

### Synonyms

CLDN18 ; CLDN18.2 ; Claudin-18.2

## Product Information

### Source

HEK293 cells

### Purification

≥ 95 % as determined by SDS-PAGE. ≥ 95 % as determined by HPLC.

### Endotoxin

< 1 EU/μg of the protein by LAL method.

### Formulation

Lyophilized from a 0.22 μm filtered solution of PBS, pH 7.4. Contact us for customized product form or formulation.

### Reconstitution

Centrifuge the vial before opening. Reconstitute to a concentration of 0.1-0.5 mg/mL in sterile distilled water. Avoid vortex or vigorously pipetting the protein. For long term storage, it is recommended to add a carrier protein or stabilizer (e.g. 0.1% BSA, 5% HSA, 10% FBS or 5% Trehalose), and aliquot the reconstituted protein solution to minimize free-thaw cycles.

## Contact



[www.abclonal.com](http://www.abclonal.com)

## Background

Claudin18(CLDN18) belongs to the large claudin family of proteins, which form tight junction strands in epithelial cells. CLDN18 is specifically expressed in the stomach and lung. CLDN18 has two alternatively spliced variants, CLDN18.1 and CLDN18.2. Isoform 2 (Claudin 18.2) is abundant in gastric tumors.

## Basic Information

### Description

Recombinant Human Claudin 18.2 Protein is produced by Expi293 cells expression system. The target protein is expressed with sequence (Met1-Val261) of Human Claudin 18.2 (Accession #P56856-2) fused with a His tag at the C-terminus.

### Bio-Activity

Immobilized Human Claudin 18.2 at 5 μg/mL (100 μL/Well). Dose response curve for Anti-Claudin 18.2 Antibody, hFc Tag with the EC<sub>50</sub> of 9.8 ng/mL determined by ELISA.

### Shipping

The product is shipped at ambient temperature. Upon receipt, store it immediately at the temperature recommended below.

### Operational Notes

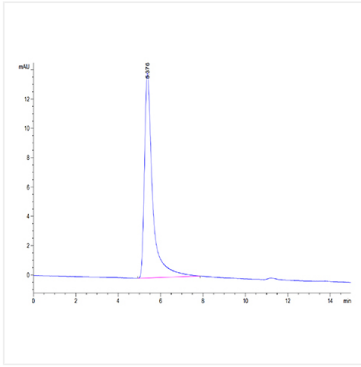
For your safety and health, please wear a lab coat and disposable gloves for handling.

### Storage

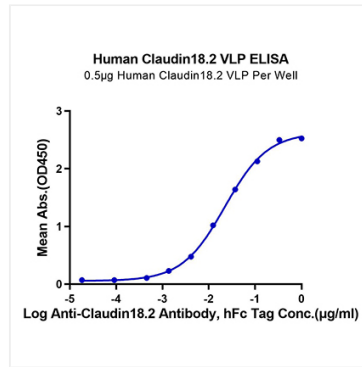
Store at -70°C. This product is stable at ≤ -70°C for up to 1 year from the date of receipt. For optimal storage, aliquot into smaller quantities after centrifugation and store at recommended temperature. Avoid repeated freeze-thaw cycles. Avoid repeated freeze/thaw cycles.

\* For your safety and health, please wear a lab coat and disposable gloves when handling.

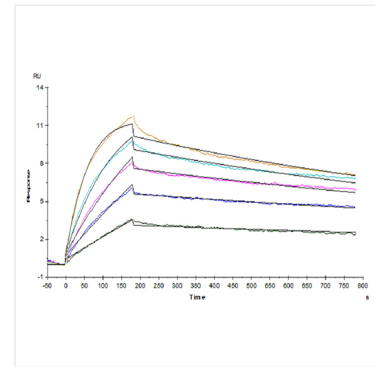
## Validation Data



The purity of Human Claudin 18.2 VLP is greater than 95% as determined by SEC-HPLC.



Immobilized Human Claudin18.2 VLP at 5µg/ml (100µl/Well). Dose response curve for Anti-Claudin18.2 Antibody, hFc Tag with the  $EC_{50}$  of 9.8 ng/ml determined by ELISA.



Human Claudin 18.2 VLP immobilized on CM5 Chip can bind Anti-Claudin18.2 Antibody with an affinity constant of 2.20 nM as determined in SPR assay (Biacore T200).