

RP01990

Leader in Biomolecular Solutions for Life Science



# Recombinant Human Insulin Receptor/INSR/CD220 Protein

Catalog No.: RP01990 **Recombinant**

## Sequence Information

Species	Gene ID	Swiss Prot
CHO Cells	3643	P06213

### Tags

C-Avi&His

### Synonyms

INSR; Insulin receptor; IR; EC:2.7.10.1; CD220; Cleaved into: Insulin receptor subunit alpha; Insulin receptor subunit beta

## Product Information

Source	Purification
	≥ 95 % as determined by HPLC.

### Endotoxin

< 0.1 EU/μg of the protein by LAL method.

### Formulation

### Reconstitution

Centrifuge the vial before opening. Reconstitute to a concentration of 0.1-0.5 mg/mL in sterile distilled water. Avoid vortex or vigorously pipetting the protein. For long term storage, it is recommended to add a carrier protein or stabilizer (e.g. 0.1% BSA, 5% HSA, 10% FBS or 5% Trehalose), and aliquot the reconstituted protein solution to minimize free-thaw cycles.

## Contact



[www.abclonal.com](http://www.abclonal.com)

## Background

This protein is a member of the receptor tyrosine kinase family of proteins. The encoded preproprotein is proteolytically processed to generate alpha and beta subunits that form a heterotetrameric receptor. Binding of insulin or other ligands to this receptor activates the insulin signaling pathway, which regulates glucose uptake and release, as well as the synthesis and storage of carbohydrates, lipids and protein. Mutations in this gene underlie the inherited severe insulin resistance syndromes including type A insulin resistance syndrome, Donohue syndrome and Rabson-Mendenhall syndrome. Alternative splicing results in multiple transcript variants.

## Basic Information

### Description

Recombinant Human Insulin Receptor/INSR/CD220 Protein is produced by CHO Cells expression system. The target protein is expressed with sequence (His28-Val944) of Human Insulin Receptor/INSR/CD220 (Accession #NP\_000199.2) fused with Avi and His tag at the C-terminus.

### Bio-Activity

Measured by its binding ability in a functional ELISA. Immobilized Human INSR at 10 μg/mL (100 μL/well) can bind Human IGF1 (Catalog #RP00996) with a linear range of 0.25-2.01 μg/mL.

### Shipping

The product is shipped at ambient temperature. Upon receipt, store it immediately at the temperature recommended below.

### Operational Notes

For your safety and health, please wear a lab coat and disposable gloves for handling.

### Storage

Store at -20°C. Store the lyophilized protein at -20°C to -80 °C up to 1 year from the date of receipt.

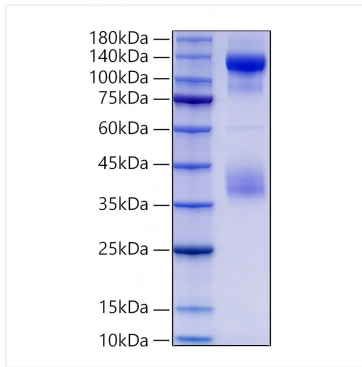
After reconstitution, the protein solution is stable at -20°C for 3 months, at 2-8°C for up to 1 week.

Avoid repeated freeze/thaw cycles.

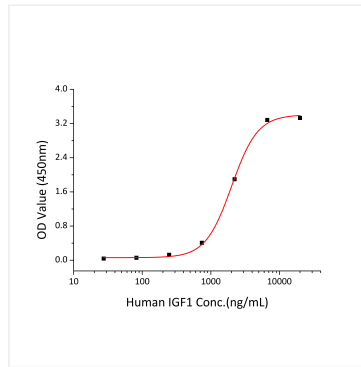
\* For your safety and health, please wear a lab coat and disposable gloves when handling.

## Validation Data

---



Recombinant Human Insulin Receptor/INSR/CD220 Protein was determined by SDS-PAGE under reducing conditions with Coomassie Blue.



Measured by its binding ability in a functional ELISA. Immobilized Human INSR at 10  $\mu\text{g/mL}$  (100  $\mu\text{L/well}$ ) can bind Human IGF1 (Catalog #RP00996) with a linear range of 0.25-2.01  $\mu\text{g/mL}$ .