

RP01885

Leader in Biomolecular Solutions for Life Science



Recombinant Mouse CCL21/6Ckine Protein

Catalog No.: RP01885

Recombinant

Sequence Information

Species Gene ID Swiss Prot

<I>Pichia</I>18829 P84444
>

Tags

C-His

Synonyms

C-C Motif Chemokine 21a; 6Ckine;
Beta-Chemokine Exodus-2; Small-
Inducible Cytokine A21a; Thymus-
Derived Chemotactic Agent 4; TCA4;
Ccl21a; Scya21; Scya21a

Product Information

Source Purification

Endotoxin

< 0.1 EU/μg of the protein by LAL
method.

Formulation

Lyophilized from a 0.2 μm filtered
solution of PBS, pH 7.4. Contact us for
customized product form or
formulation.

Reconstitution

Centrifuge the vial before opening.
Reconstitute to a concentration of
0.1-0.5 mg/mL in sterile distilled water.
Avoid vortex or vigorously pipetting
the protein. For long term storage, it is
recommended to add a carrier protein
or stabilizer (e.g. 0.1% BSA, 5% HSA,
10% FBS or 5% Trehalose), and aliquot
the reconstituted protein solution to
minimize free-thaw cycles.

Contact



www.abclonal.com

Background

C-C Motif Chemokine 21a (CCL21a) is a small secreted cytokine that belongs to the intercrine beta (CCchemokine) family. Mouse CCL21 cDNA encodes a 133 amino acid residue protein with a 23 residue signalpeptide that is cleaved to generate the 110 residue mature protein. Mouse CCL21 has three forms while CCL21a has Ser-65. CCL21 elicits its effects by binding to a cell surface chemokine receptor known as CCR7 and CXCR3. Mouse CCL21 inhibits hemopoiesis and stimulates chemotaxis. It has chemotactic function in vitro for thymocytes and activated T-cells, but not for B-cells, macrophages, or neutrophils. Mouse CCL21 shows preferential activity towards naive T-cells and may play a role in mediating homing of lymphocytes to secondary lymphoid organs.

Basic Information

Description

Recombinant Mouse CCL21A Protein is produced by *Pichia* expression system. The target protein is expressed with sequence (Ser24-Gly133) of Mouse CCL21A (Accession #P84444) fused with a His tag at the C-terminus.

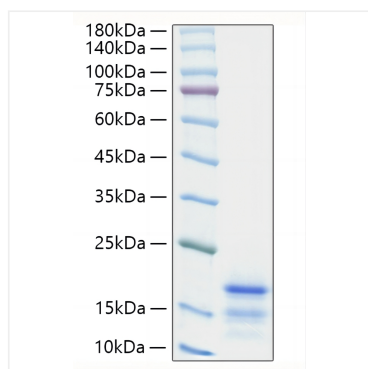
Bio-Activity

Storage

Store at -20°C. Store the lyophilized protein at -20°C to -80 °C up to 1 year from the date of receipt.
After reconstitution, the protein solution is stable at -20°C for 3 months, at 2-8°C for up to 1 week.
Avoid repeated freeze/thaw cycles.

* For your safety and health, please wear a lab coat and disposable gloves when handling.

Validation Data



Recombinant Mouse CCL21/6Ckine Protein was determined by SDS-PAGE with Coomassie Blue, showing a band at 15-25 kDa.