

RP01850

Leader in Biomolecular Solutions for Life Science



# Recombinant Human Semaphorin-6A/SEMA6A Protein

Catalog No.: RP01850 **Recombinant**

## Sequence Information

Species	Gene ID	Swiss Prot
HEK293 cells	57556	Q9H2E6-1

### Tags

C-His

### Synonyms

Semaphorin-6A; Semaphorin VIA;  
Sema VIA; Semaphorin-6A-1;  
SEMA6A-1 , SEMA6A; KIAA1368;  
SEMAQ

## Product Information

Source	Purification
HEK293 cells	≥ 90% as determined by SDS-PAGE.

### Endotoxin

< 0.01 EU/μg of the protein by LAL method

### Formulation

Lyophilized from a 0.22 μm filtered solution of PBS, pH 7.4.

### Reconstitution

Centrifuge the vial before opening. Reconstitute to a concentration of 0.1-0.5 mg/mL in sterile distilled water. Avoid vortex or vigorously pipetting the protein. For long term storage, it is recommended to add a carrier protein or stabilizer (e.g. 0.1% BSA, 5% HSA, 10% FBS or 5% Trehalose), and aliquot the reconstituted protein solution to minimize free-thaw cycles.

## Contact



[www.abclonal.com](http://www.abclonal.com)

## Background

The transmembrane semaphorin SEMA6A is expressed in developing neural tissue and is required for proper development of the thalamocortical projection, Cell surface receptor for PLXNA2 that plays an important role in cell-cell signaling. Required for normal granule cell migration in the developing cerebellum. Promotes reorganization of the actin cytoskeleton and plays an important role in axon guidance in the developing central nervous system. Can act as repulsive axon guidance cue. Has repulsive action towards migrating granular neurons. May play a role in channeling sympathetic axons into the sympathetic chains and controlling the temporal sequence of sympathetic target innervation.

## Basic Information

### Description

Recombinant Human Semaphorin-6A/SEMA6A Protein is produced by HEK293 cells expression system. The target protein is expressed with sequence (Met1-Thr649) of Human Semaphorin-6A/SEMA6A (Accession #NP\_065847.1) fused with a His tag at the C-terminus.

### Bio-Activity

### Shipping

The product is shipped at ambient temperature. Upon receipt, store it immediately at the temperature recommended below.

### Operational Notes

For your safety and health, please wear a lab coat and disposable gloves for handling.

### Storage

Store at -20°C. Store the lyophilized protein at -20°C to -80 °C up to 1 year from the date of receipt.

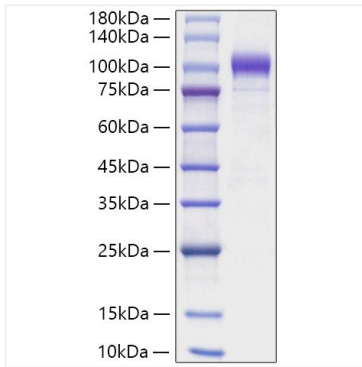
After reconstitution, the protein solution is stable at -20°C for 3 months, at 2-8°C for up to 1 week.

Avoid repeated freeze/thaw cycles.

\* For your safety and health, please wear a lab coat and disposable gloves when handling.

## Validation Data

---



Recombinant Human Semaphorin-6A/SEMA6A Protein was determined by SDS-PAGE under reducing conditions with Coomassie Blue.