

RP01845

Leader in Biomolecular Solutions for Life Science



# Recombinant Human Gastrin-releasing peptide/GRP Protein

Catalog No.: RP01845 **Recombinant**

## Sequence Information

<b>Species</b>	<b>Gene ID</b>	<b>Swiss Prot</b>
HEK293 cells	2922	P07492

### Tags

C-hFc

### Synonyms

BN; GRP-10; proGRP;  
preproGRP; Gastrin-releasing  
peptide; GRP; progastrin-releasing  
peptide

## Product Information

<b>Source</b>	<b>Purification</b>
---------------	---------------------

HEK293 cells

### Endotoxin

< 0.1 EU/μg

### Formulation

Lyophilized from a 0.22 μm filtered  
solution of PBS, pH 7.4.

### Reconstitution

Centrifuge the vial before opening.  
Reconstitute to a concentration of  
0.1-0.5 mg/mL in sterile distilled water.  
Avoid vortex or vigorously pipetting  
the protein. For long term storage, it is  
recommended to add a carrier protein  
or stabilizer (e.g. 0.1% BSA, 5% HSA,  
10% FBS or 5% Trehalose), and aliquot  
the reconstituted protein solution to  
minimize free-thaw cycles.

## Background

Gastrin-releasing peptide (GRP) is a neuropeptide with growth-stimulatory and tumorigenic properties, and neuropeptides have previously been suggested to play a role in the complex cascade of chemical activity associated with periodontal inflammation.

## Basic Information

### Description

Recombinant Human Gastrin-releasing peptide/GRP Protein is produced by HEK293 cells expression system. The target protein is expressed with sequence (Arg22-Gly148) of human Gastrin-releasing peptide/GRP (Accession #) fused with a hFc tag at the C-terminus.

### Bio-Activity

### Storage

Store at -20°C. Store the lyophilized protein at -20°C to -80 °C up to 1 year from the date of receipt. <br/>After reconstitution, the protein solution is stable at -20°C for 3 months, at 2-8°C for up to 1 week.  
Avoid repeated freeze/thaw cycles.

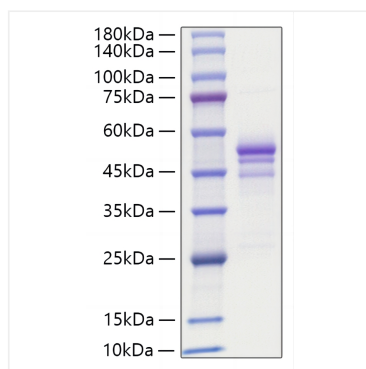
## Contact



[www.abclonal.com](http://www.abclonal.com)

## Validation Data

---



Recombinant Human Gastrin-releasing peptide/GRP Protein was determined by SDS-PAGE with Coomassie Blue, showing a band at 45-60 kDa