

RP01746

Leader in Biomolecular Solutions for Life Science



www.abclonal.com

# Recombinant Human Chorionic somatomammotropin hormone 1/Choriomammotropin/CSH1 Protein

Catalog No.: RP01746 **Recombinant**

## Sequence Information

Species	Gene ID	Swiss Prot
HEK293 cells	1442	P0DML2

### Tags

C-6His

### Synonyms

PL; CSA; CS-1; CSMT; GHB3; hCS-1; hCS-A

## Product Information

Source	Purification
HEK293 cells	≥ 95 % as determined by SDS-PAGE.

### Endotoxin

< 0.1 EU/μg of the protein by LAL method.

### Formulation

Lyophilized from a 0.22 μm filtered solution of PBS, pH 7.4.

### Reconstitution

Centrifuge the vial before opening. Reconstitute to a concentration of 0.1-0.5 mg/mL in sterile distilled water. Avoid vortex or vigorously pipetting the protein. For long term storage, it is recommended to add a carrier protein or stabilizer (e.g. 0.1% BSA, 5% HSA, 10% FBS or 5% Trehalose), and aliquot the reconstituted protein solution to minimize free-thaw cycles.

## Contact



[www.abclonal.com](http://www.abclonal.com)

## Background

Chorionic somatomammotropin hormone, also known as Choriomammotropin, Lactogen, Placental lactogen and CSH1, is a secreted protein which belongs to the somatotropin / prolactin family. CSH1 is produced only during pregnancy and is involved in stimulating lactation, fetal growth and metabolism. Does not interact with GHR but only activates PRLR through zinc-induced dimerization. The CSH1 gene is member of the GH gene cluster on 17q, which consists of two growth hormone genes and three CSH genes. Genomic alterations in the GH cluster are well known, causing different phenotypes depending on the size of the deletion and the genes involved. The increased prevalence of hemizygosity of CSH1 in population in comparison to controls indicates a role for CSH1 haploinsufficiency in the etiology of growth retardation. Investigation of CSH1 deletions in further SRS and growth retarded patients will enable us to establish under which circumstances haploinsufficiency of CSH1 is likely to result in clinical changes.

## Basic Information

### Description

Recombinant Human Chorionic somatomammotropin hormone 1/Choriomammotropin/CSH1 Protein is produced by HEK293 cells expression system. The target protein is expressed with sequence (Val27-Phe217) of human Chorionic somatomammotropin hormone 1/Choriomammotropin/CSH1 (Accession #NP\_001308.1) fused with a 6×His tag at the C-terminus.

### Bio-Activity

### Shipping

The product is shipped at ambient temperature. Upon receipt, store it immediately at the temperature recommended below.

### Operational Notes

For your safety and health, please wear a lab coat and disposable gloves for handling.

### Storage

Store at -20°C. Store the lyophilized protein at -20°C to -80 °C up to 1 year from the date of receipt.

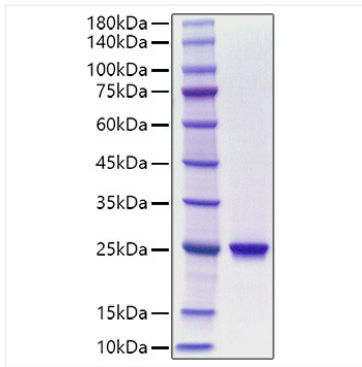
After reconstitution, the protein solution is stable at -20°C for 3 months, at 2-8°C for up to 1 week.

Avoid repeated freeze/thaw cycles.

\* For your safety and health, please wear a lab coat and disposable gloves when handling.

## Validation Data

---



Recombinant Human Chorionic somatomammotropin hormone 1/Choriomammotropin/CSH1 Protein was determined by SDS-PAGE under reducing conditions with Coomassie Blue.