

RP01731

Leader in Biomolecular Solutions for Life Science



Recombinant human SECTM1 Protein

Catalog No.: RP01731 **Recombinant**

Sequence Information

Species	Gene ID	Swiss Prot
HEK293 cells	6398	Q8WVN6

Tags

C-6His

Synonyms

K12; SECTM;SECTM1

Product Information

Source	Purification
HEK293 cells	≥ 95 % as determined by SDS-PAGE.

Endotoxin

< 0.01 EU/μg of the protein by LAL method

Formulation

Lyophilized from a 0.22 μm filtered solution of PBS, pH 7.4.

Reconstitution

Centrifuge the vial before opening. Reconstitute to a concentration of 0.1-0.5 mg/mL in sterile distilled water. Avoid vortex or vigorously pipetting the protein. For long term storage, it is recommended to add a carrier protein or stabilizer (e.g. 0.1% BSA, 5% HSA, 10% FBS or 5% Trehalose), and aliquot the reconstituted protein solution to minimize free-thaw cycles.

Contact



www.abclonal.com

Background

Secreted and transmembrane 1 (SECTM1), also known as K12, is a transmembrane and secreted protein with characteristics of a type 1a transmembrane protein of SECTM family. It is found in a perinuclear Golgi-like pattern and thought to be involved in hematopoietic and/or immune system processes.

Basic Information

Description

Recombinant human SECTM1 Protein is produced by HEK293 cells expression system. The target protein is expressed with sequence (Gln29-Gly145) of human SECTM1 (Accession #NP_002995.1.) fused with and a 6×His tag at the C-terminus.

Bio-Activity

Shipping

The product is shipped at ambient temperature. Upon receipt, store it immediately at the temperature recommended below.

Operational Notes

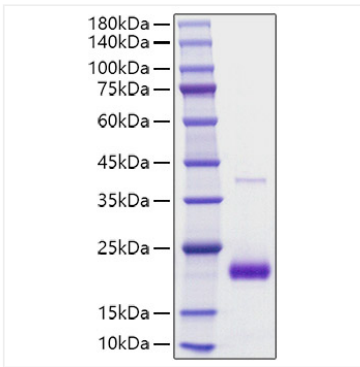
For your safety and health, please wear a lab coat and disposable gloves for handling.

Storage

Store at -20°C. Store the lyophilized protein at -20°C to -80 °C up to 1 year from the date of receipt. After reconstitution, the protein solution is stable at -20°C for 3 months, at 2-8°C for up to 1 week. Avoid repeated freeze/thaw cycles.

* For your safety and health, please wear a lab coat and disposable gloves when handling.

Validation Data



Recombinant human SECTM1 Protein was determined by SDS-PAGE under reducing conditions with Coomassie Blue.