

RP01716

Leader in Biomolecular Solutions for Life Science



Recombinant Mouse CCL6 Protein

Catalog No.: RP01716 **Recombinant**

Sequence Information

Species	Gene ID	Swiss Prot
HEK293 cells	20305	P27784

Tags

C-6His

Synonyms

c10; MRP-1; Scya6;CCL6

Product Information

Source	Purification
HEK293 cells	≥ 95 % as determined by SDS-PAGE.

Endotoxin

< 1 EU/μg of the protein by LAL method.

Formulation

Lyophilized from a 0.22 μm filtered solution of PBS, pH 7.4.

Reconstitution

Centrifuge the vial before opening. Reconstitute to a concentration of 0.1-0.5 mg/mL in sterile distilled water. Avoid vortex or vigorously pipetting the protein. For long term storage, it is recommended to add a carrier protein or stabilizer (e.g. 0.1% BSA, 5% HSA, 10% FBS or 5% Trehalose), and aliquot the reconstituted protein solution to minimize free-thaw cycles.

Contact



www.abclonal.com

Background

Chemokine (C-C motif) ligand 6 (CCL6), also known as C-C chemokine C10 has only been identified in rodents, which is a small cytokine belonging to the CC chemokine family, beta-chemokine subfamily. C-C chemokine C10 is involved in the chronic stages of host defense reactions. C10 chemokine rapidly promotes disease resolution in the cecal ligation and puncture (CLP) model through its direct effects on the cellular events critically involved in host defense during septic peritonitis. CCL6 appears to contribute to the macrophage infiltration that is independent of other CC chemokines. C10 is a prominent chemokine expressed in the central nervous system in experimental inflammatory demyelinating disease, also acts as a potent chemotactic factor for the migration of these leukocytes to the brain. CCL6 may be a mediator released by microglia for cell-cell communication under physiological as well as pathological conditions of CNS. Additionally, the chemokine CCL6 may alter tumor behavior by relieving its growth factor dependency and by promoting invasiveness as a result of local tissue apoptosis.

Basic Information

Description

Recombinant Mouse CCL6 Protein is produced by HEK293 cells expression system. The target protein is expressed with sequence (Gly22 - Ala116) of mouse CCL6 (Accession #NP_033165.1.) fused with and a 6×His tag at the C-terminus.

Bio-Activity

Shipping

The product is shipped at ambient temperature. Upon receipt, store it immediately at the temperature recommended below.

Operational Notes

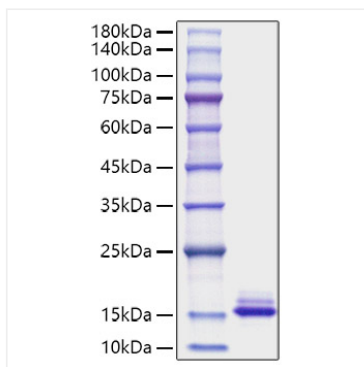
For your safety and health, please wear a lab coat and disposable gloves for handling.

Storage

Store at -20°C. Store the lyophilized protein at -20°C to -80 °C up to 1 year from the date of receipt. After reconstitution, the protein solution is stable at -20°C for 3 months, at 2-8°C for up to 1 week. Avoid repeated freeze/thaw cycles.

* For your safety and health, please wear a lab coat and disposable gloves when handling.

Validation Data



Recombinant Mouse CCL6 Protein was determined by SDS-PAGE under reducing conditions with Coomassie Blue.