

RP01657

Leader in Biomolecular Solutions for Life Science



Recombinant Human CCL2/MCP-1 Protein

Catalog No.: RP01657 **Recombinant**

Sequence Information

Species	Gene ID	Swiss Prot
<i>Pichia</i>	I6347	P13500

Tags

NO-tag

Synonyms

HC11; MCAF; MCP1; MCP-1; SCYA2;
GDCF-2; SMC-CF; HSMCR30;CCL2

Product Information

Source	Purification
<i>Pichia</i>	≥ 95 % as determined by SDS-PAGE.

Endotoxin

< 0.1 EU/μg of the protein by LAL method.

Formulation

Lyophilized from a 0.22 μm filtered solution of PBS, pH 7.4.

Reconstitution

Centrifuge the vial before opening. Reconstitute to a concentration of 0.1-0.5 mg/mL in sterile distilled water. Avoid vortex or vigorously pipetting the protein. For long term storage, it is recommended to add a carrier protein or stabilizer (e.g. 0.1% BSA, 5% HSA, 10% FBS or 5% Trehalose), and aliquot the reconstituted protein solution to minimize free-thaw cycles.

Contact



www.abclonal.com

Background

Monokine with inflammatory and chemokinetic properties. Binds to CCR5. One of the major HIV-suppressive factors produced by CD8+ T-cells. Recombinant MIP-1-beta induces a dose-dependent inhibition of different strains of HIV-1, HIV-2, and simian immunodeficiency virus (SIV). The processed form MIP-1-beta(3-69) retains the abilities to induce down-modulation of surface expression of the chemokine receptor CCR5 and to inhibit the CCR5-mediated entry of HIV-1 in T-cells. MIP-1-beta(3-69) is also a ligand for CCR1 and CCR2 isoform B.

Basic Information

Description

Recombinant Human CCL2/MCP-1 Protein is produced by *Pichia* expression system. The target protein is expressed with sequence (Gln24-Thr99) of human CCL2/MCP-1 (Accession #NP_002973.1) fused with no additional amino acid.

Bio-Activity

Measured by its ability to chemoattract THP-1 cells. The ED50 for this effect is typically 13.56-54.24 ng/mL.

Shipping

The product is shipped at ambient temperature. Upon receipt, store it immediately at the temperature recommended below.

Operational Notes

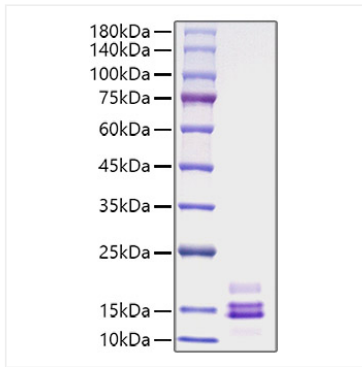
For your safety and health, please wear a lab coat and disposable gloves for handling.

Storage

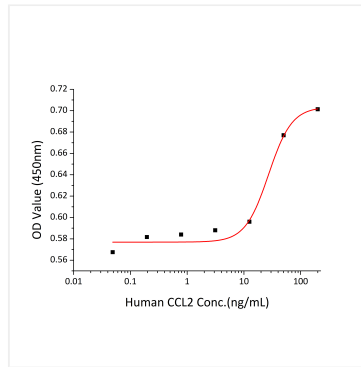
Store at -20°C. Store the lyophilized protein at -20°C to -80 °C up to 1 year from the date of receipt. After reconstitution, the protein solution is stable at -20°C for 3 months, at 2-8°C for up to 1 week. Avoid repeated freeze/thaw cycles.

* For your safety and health, please wear a lab coat and disposable gloves when handling.

Validation Data



Recombinant Human CCL2/MCP-1 Protein was determined by SDS-PAGE under reducing conditions with Coomassie Blue.



Recombinant Human CCL2/MCP-1 chemoattract THP-1 cells. The ED50 for this effect is typically 13.56-54.24 ng/mL.