

RP01633

Leader in Biomolecular Solutions for Life Science



Recombinant Human CCL13/MCP-4 Protein

Catalog No.: RP01633

Recombinant

Sequence Information

Species	Gene ID	Swiss Prot
HEK293 cells	6357	Q99616

Tags

C-hFc

Synonyms

NCC1; CKb10; MCP-4; NCC-1; SCYL1; SCYA13; CCL13

Product Information

Source	Purification
HEK293 cells	> 95% by SDS-PAGE.

Endotoxin

<0.1EU/μg

Formulation

Lyophilized from a 0.22 μm filtered solution of PBS, pH 7.4.

Reconstitution

Centrifuge the vial before opening. Reconstitute to a concentration of 0.1-0.5 mg/mL in sterile distilled water. Avoid vortex or vigorously pipetting the protein. For long term storage, it is recommended to add a carrier protein or stabilizer (e.g. 0.1% BSA, 5% HSA, 10% FBS or 5% Trehalose), and aliquot the reconstituted protein solution to minimize free-thaw cycles.

Background

Chemotactic factor that attracts monocytes, lymphocytes, basophils and eosinophils, but not neutrophils. Signals through CCR2B and CCR3 receptors. Plays a role in the accumulation of leukocytes at both sides of allergic and non-allergic inflammation. May be involved in the recruitment of monocytes into the arterial wall during the disease process of atherosclerosis. May play a role in the monocyte attraction in tissues chronically exposed to exogenous pathogens.

Basic Information

Description

Recombinant Human CCL13/MCP-4 Protein is produced by HEK293 cells expression system. The target protein is expressed with sequence (Gln24-Thr98) of human CCL13/MCP-4 (Accession #NP_005399.1) fused with and a hFc tag at the C-terminus.

Bio-Activity

Storage

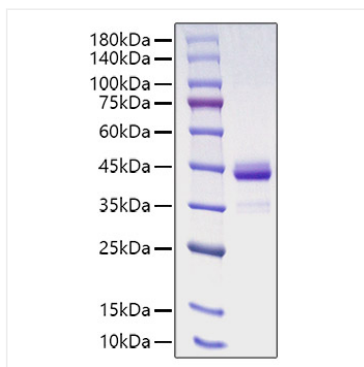
Store at -20°C. Store the lyophilized protein at -20°C to -80 °C up to 1 year from the date of receipt. After reconstitution, the protein solution is stable at -20°C for 3 months, at 2-8°C for up to 1 week. Avoid repeated freeze/thaw cycles.

Contact



www.abclonal.com

Validation Data



Recombinant Human CCL13/MCP-4 Protein was determined by SDS-PAGE with Coomassie Blue, showing a band at 38.6 kDa.