

RP01632

Leader in Biomolecular Solutions for Life Science



Recombinant Human Afamin/AFM Protein

Catalog No.: RP01632 **Recombinant**

Sequence Information

Species	Gene ID	Swiss Prot
HEK293 cells	173	P43652

Tags

C-His

Synonyms

ALF; ALB2; ALBA;AFM

Product Information

Source	Purification
HEK293 cells	≥ 95 % as determined by SDS-PAGE.

Endotoxin

< 0.1 EU/μg of the protein by LAL method.

Formulation

Lyophilized from a 0.22 μm filtered solution of PBS, pH 7.4.

Reconstitution

Centrifuge the vial before opening. Reconstitute to a concentration of 0.1-0.5 mg/mL in sterile distilled water. Avoid vortex or vigorously pipetting the protein. For long term storage, it is recommended to add a carrier protein or stabilizer (e.g. 0.1% BSA, 5% HSA, 10% FBS or 5% Trehalose), and aliquot the reconstituted protein solution to minimize free-thaw cycles.

Contact



www.abclonal.com

Background

Afamin is an 87 kDa glycoprotein with five predicted N-glycosylation sites. Afamin's glycan abundance contributes to conformational and chemical inhomogeneity presenting great challenges for molecular structure determination. Afamin, a human plasma glycoprotein and putative transporter of hydrophobic molecules, has been shown to act as extracellular chaperone for poorly soluble, acylated Wnt proteins, forming a stable, soluble complex with functioning Wnt proteins. The 2.1-Å crystal structure of glycosylated human afamin reveals an almost exclusively hydrophobic binding cleft capable of harboring large hydrophobic moieties. Afamin plays a role in anti-apoptotic cellular processes related to oxidative stress and is associated with insulin resistance and other features of metabolic syndrome. Afamin may serve as a new early biomarker for pathological glucose metabolism during pregnancy. And first trimester screening for pre-eclampsia could be provided by a combination of afamin and placental bed vascularization. Moreover, the combination of first trimester serum afamin levels with BMI could provide a possible screening for gestational diabetes mellitus.

Basic Information

Description

Recombinant Human Afamin/AFM Protein is produced by HEK293 cells expression system. The target protein is expressed with sequence (Met1-Asn599) of human Afamin/AFM (Accession #NP_001124.1) fused with and a 6×His tag at the C-terminus.

Bio-Activity

Shipping

The product is shipped at ambient temperature. Upon receipt, store it immediately at the temperature recommended below.

Operational Notes

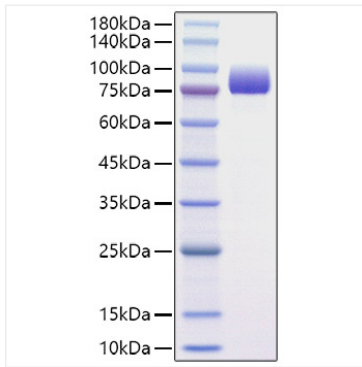
For your safety and health, please wear a lab coat and disposable gloves for handling.

Storage

Store at -20°C. Store the lyophilized protein at -20°C to -80 °C up to 1 year from the date of receipt. After reconstitution, the protein solution is stable at -20°C for 3 months, at 2-8°C for up to 1 week. Avoid repeated freeze/thaw cycles.

* For your safety and health, please wear a lab coat and disposable gloves when handling.

Validation Data



Recombinant Human Afamin/AFM Protein was determined by SDS-PAGE under reducing conditions with Coomassie Blue.