

RP01620

Leader in Biomolecular Solutions for Life Science



Recombinant Mouse BTLA/CD272 Protein

Catalog No.: RP01620

Recombinant

Sequence Information

Species	Gene ID	Swiss Prot
HEK293 cells	208154	Q7TSA3

Tags

C-hFc

Synonyms

CD272; BTLA; BTLA1; FLJ16065;
MGC129743;BTLA

Product Information

Source	Purification
HEK293 cells	≥ 95 % as determined by SDS-PAGE.

Endotoxin

< 0.1 EU/μg of the protein by LAL method.

Formulation

Lyophilized from a 0.22 μm filtered solution of PBS, pH 7.4.

Reconstitution

Centrifuge the vial before opening.
Reconstitute to a concentration of 0.1-0.5 mg/mL in sterile distilled water.
Avoid vortex or vigorously pipetting the protein. For long term storage, it is recommended to add a carrier protein or stabilizer (e.g. 0.1% BSA, 5% HSA, 10% FBS or 5% Trehalose), and aliquot the reconstituted protein solution to minimize free-thaw cycles.

Background

B- and T-lymphocyte attenuator (BTLA; CD272) is a 35 kDa type I transmembrane glycoprotein in the CD28 family of T cell costimulatory molecules. BTLA is a inhibitory receptor on lymphocytes that negatively regulates antigen receptor signaling via PTPN6/SHP-1 and PTPN11/SHP-2. BTLA may interact in cis (on the same cell) or in trans (on other cells) with TNFRSF14.

Basic Information

Description

Recombinant Mouse BTLA/CD272 Protein is produced by HEK293 cells expression system. The target protein is expressed with sequence (Glu30-Pro176) of mouse BTLA (Accession #NP_001032808.2) fused with a hFc tag at the C-terminus.

Bio-Activity

Storage

Store at -20°C. Store the lyophilized protein at -20°C to -80 °C up to 1 year from the date of receipt.

After reconstitution, the protein solution is stable at -20°C for 3 months, at 2-8°C for up to 1 week.

Avoid repeated freeze/thaw cycles.

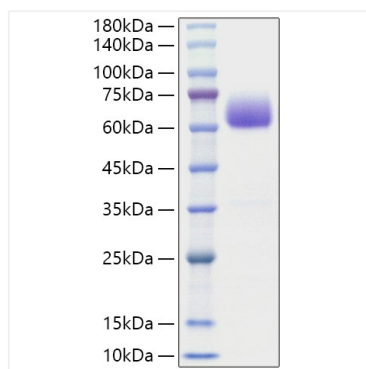
Contact



www.abclonal.com

* For your safety and health, please wear a lab coat and disposable gloves when handling.

Validation Data



Recombinant Mouse BTLA/CD272
Protein was determined by SDS-
PAGE under reducing conditions with
Coomassie Blue.