

RP01614

Leader in Biomolecular Solutions for Life Science



Recombinant Human CCL13/MCP-4 Protein

Catalog No.: RP01614 **Recombinant**

Sequence Information

Species	Gene ID	Swiss Prot
<I>Pichia</I>	/I6357	Q99616

Tags

No tag

Synonyms

CCL13;CKb10;MCP-4;NCC-1;NCC1;SCYA13;SCYL1

Product Information

Source	Purification
<I>Pichia</I>	≥ 95 % as determined by SDS-PAGE.

Endotoxin

< 0.1 EU/μg of the protein by LAL method.

Formulation

Lyophilized from a 0.22 μm filtered solution of PBS, pH 7.4.

Reconstitution

Centrifuge the vial before opening. Reconstitute to a concentration of 0.1-0.5 mg/mL in sterile distilled water. Avoid vortex or vigorously pipetting the protein. For long term storage, it is recommended to add a carrier protein or stabilizer (e.g. 0.1% BSA, 5% HSA, 10% FBS or 5% Trehalose), and aliquot the reconstituted protein solution to minimize free-thaw cycles.

Contact



www.abclonal.com

Background

Monocyte Chemoattractant Proteins 4 (MCP-4/CCL13) is a member of a distinct, structurally-related subclass of CC chemokines mainly involved in recruitment of eosinophils to inflammatory sites. CCL13/MCP-4, is a CC family chemokine that is chemoattractant for eosinophils, basophils, monocytes, macrophages, immature dendritic cells, and T cells, and its capable of inducing crucial immuno-modulatory responses through its effects on epithelial, muscular and endothelial cells. Similar to other CC chemokines, CCL13 binds to several chemokine receptors (CCR1, CCR2 and CCR3), allowing it to elicit different effects on its target cells. A number of studies have shown that CCL13 is involved in many chronic inflammatory diseases, in which it functions as a pivotal molecule involved in the selective recruitment of cell lineages to the inflamed tissues and their subsequent activation. MCP-4/CCL13 is secreted from chondrocytes and activates the proliferation of rheumatoid synovial cells, thereby leading to joint destruction in RA.

Basic Information

Description

Recombinant Human CCL13/MCP-4 Protein is produced by *Pichia* expression system. The target protein is expressed with sequence (Gln24-Thr98) of human CCL13/MCP-4 (Accession #NP_005399.1) fused with no additional amino acid.

Bio-Activity

Shipping

The product is shipped at ambient temperature. Upon receipt, store it immediately at the temperature recommended below.

Operational Notes

For your safety and health, please wear a lab coat and disposable gloves for handling.

Storage

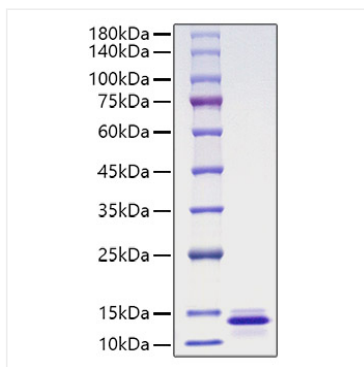
Store at -20°C. Store the lyophilized protein at -20°C to -80 °C up to 1 year from the date of receipt.

After reconstitution, the protein solution is stable at -20°C for 3 months, at 2-8°C for up to 1 week.

Avoid repeated freeze/thaw cycles.

* For your safety and health, please wear a lab coat and disposable gloves when handling.

Validation Data



Recombinant Human CCL13/MCP-4 Protein was determined by SDS-PAGE under reducing conditions with Coomassie Blue.