

RP01612LQ

Leader in Biomolecular Solutions for Life Science



Recombinant Human CCL5/RANTES Protein

Catalog No.: RP01612LQ **Recombinant**

Sequence Information

Species	Gene ID	Swiss Prot
<I>Pichia</I>	/I6352	P13501

Tags
No tag

Synonyms
D17S136E; eoCP; RANTES; SCYA5; SIS-delta; SISd; TCP228;CCL5

Product Information

Source	Purification
<I>Pichia</I>	≥ 95 % as determined by SDS-PAGE.

Endotoxin
<0.1EU/μg

Formulation
Supplied as a 0.22 μm filtered solution in PBS, pH 7.4.

Reconstitution

Background

Chemokines form a superfamily of secreted proteins involved in immunoregulatory and inflammatory processes. The superfamily is divided into four subfamilies based on the arrangement of the N-terminal cysteine residues of the mature peptide. This chemokine, a member of the CC subfamily, functions as a chemoattractant for blood monocytes, memory T helper cells and eosinophils. It causes the release of histamine from basophils and activates eosinophils. This cytokine is one of the major HIV-suppressive factors produced by CD8+ cells. It functions as one of the natural ligands for the chemokine receptor chemokine (C-C motif) receptor 5 (CCR5), and it suppresses in vitro replication of the R5 strains of HIV-1, which use CCR5 as a coreceptor. Alternative splicing results in multiple transcript variants that encode different isoforms.

Basic Information

Description
Recombinant Human CCL5/RANTES Protein

Bio-Activity
Measured by its binding ability in a functional ELISA. Immobilized Human CCL5 (Catalog: RP01612LQ) at 2 μg/mL (100 μL/well) can bind Mouse CXCL4(Catalog: RP03170) with a linear range of 0.123-0.188 μg/mL.

Shipping
The product is shipped at ambient temperature. Upon receipt, store it immediately at the temperature recommended below.

Operational Notes
For your safety and health, please wear a lab coat and disposable gloves for handling.

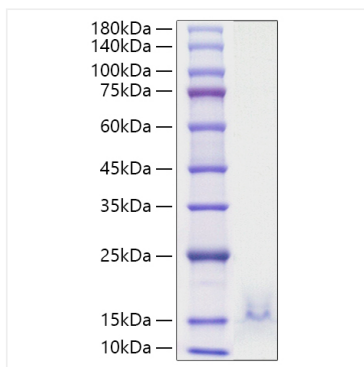
Storage
Store at -70°C. This product is stable at ≤ -70°C for up to 1 year from the date of receipt. For optimal storage, aliquot into smaller quantities after centrifugation and store at recommended temperature. Avoid repeated freeze-thaw cycles. Avoid repeated freeze/thaw cycles.

Contact

 www.abclonal.com

* For your safety and health, please wear a lab coat and disposable gloves when handling.

Validation Data



Recombinant Human CCL5/RANTES Protein was determined by SDS-PAGE under reducing conditions with Coomassie Blue.