

RP01608

Leader in Biomolecular Solutions for Life Science



# Recombinant Human IGF-I Protein

Catalog No.: RP01608 **Recombinant**

## Sequence Information

Species	Gene ID	Swiss Prot
<I>Pichia</I>	I3479	P05019-1

### Tags

No tag

### Synonyms

IGF-1;IGF-I;IGF1A;IGFI;IGF?I;MGF;IGF1

## Product Information

### Source

<I>Pichia</I>

### Purification

≥ 95 % as determined by SDS-PAGE.

### Endotoxin

< 0.1 EU/μg of the protein by LAL method.

### Formulation

Lyophilized from a 0.22 μm filtered solution of PBS, pH 7.4.

### Reconstitution

Centrifuge the vial before opening. Reconstitute to a concentration of 0.1-0.5 mg/mL in sterile distilled water. Avoid vortex or vigorously pipetting the protein. For long term storage, it is recommended to add a carrier protein or stabilizer (e.g. 0.1% BSA, 5% HSA, 10% FBS or 5% Trehalose), and aliquot the reconstituted protein solution to minimize free-thaw cycles.

## Contact



[www.abclonal.com](http://www.abclonal.com)

## Background

### Basic Information

#### Description

Recombinant Human IGF-I Protein is produced by *Pichia* expression system. The target protein is expressed with sequence (Gly49-Ala118) of human IGF-I (Accession #NP\_001104755.1) fused with no additional amino acid.

#### Bio-Activity

Measured in a serum-free cell proliferation assay using MCF-7 human breast cancer cells. The ED<sub>50</sub> for this effect is typically 53.5-214.2 ng/mL.

#### Shipping

The product is shipped at ambient temperature. Upon receipt, store it immediately at the temperature recommended below.

#### Operational Notes

For your safety and health, please wear a lab coat and disposable gloves for handling.

#### Storage

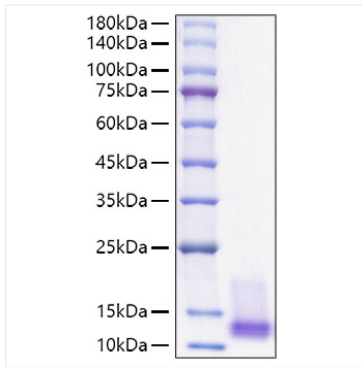
Store at -20°C. Store the lyophilized protein at -20°C to -80 °C up to 1 year from the date of receipt.

After reconstitution, the protein solution is stable at -20°C for 3 months, at 2-8°C for up to 1 week.

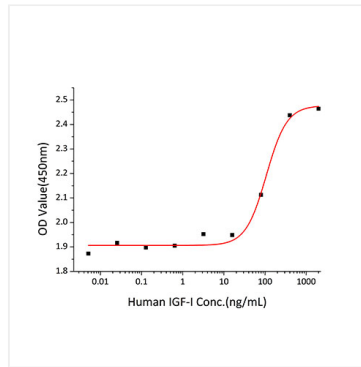
Avoid repeated freeze/thaw cycles.

\* For your safety and health, please wear a lab coat and disposable gloves when handling.

## Validation Data



Recombinant Human IGF-I Protein was determined by SDS-PAGE under reducing conditions with Coomassie Blue.



Recombinant Human IGF-I stimulates cell proliferation of the MCF-7 human breast cancer cells. The  $ED_{50}$  for this effect is typically 53.5-214.2 ng/mL.