

RP01582

Leader in Biomolecular Solutions for Life Science



Recombinant Mouse Serpin F1/PEDF Protein

Catalog No.: RP01582 **Recombinant**

Sequence Information

Species	Gene ID	Swiss Prot
HEK293 cells	20317	P97298

Tags

C-His

Synonyms

EPC-1;OI12;OI6;PEDF;PIG35;SerpinF1

Product Information

Source	Purification
HEK293 cells	≥ 95 % as determined by SDS-PAGE.

Endotoxin

< 0.1 EU/μg of the protein by LAL method.

Formulation

Lyophilized from a 0.22 μm filtered solution of PBS, pH 7.4.

Reconstitution

Centrifuge the vial before opening. Reconstitute to a concentration of 0.1-0.5 mg/mL in sterile distilled water. Avoid vortex or vigorously pipetting the protein. For long term storage, it is recommended to add a carrier protein or stabilizer (e.g. 0.1% BSA, 5% HSA, 10% FBS or 5% Trehalose), and aliquot the reconstituted protein solution to minimize free-thaw cycles.

Contact



www.abclonal.com

Background

The protein is a member of the serpin family, although it does not display the serine protease inhibitory activity shown by many of the other serpin family members. The encoded protein is secreted and strongly inhibits angiogenesis. In addition, this protein is a neurotrophic factor involved in neuronal differentiation in retinoblastoma cells.

Basic Information

Description

Recombinant Mouse Serpin F1/PEDF Protein is produced by HEK293 cells expression system. The target protein is expressed with sequence (Gln20-Thr417) of mouse Serpin F1 (Accession #NP_035470.3) fused with a 6×His tag at the C-terminus.

Bio-Activity

Shipping

The product is shipped at ambient temperature. Upon receipt, store it immediately at the temperature recommended below.

Operational Notes

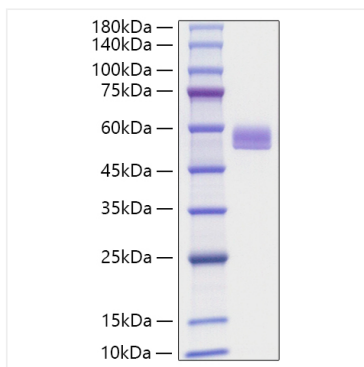
For your safety and health, please wear a lab coat and disposable gloves for handling.

Storage

Store at -20°C. Store the lyophilized protein at -20°C to -80 °C up to 1 year from the date of receipt. After reconstitution, the protein solution is stable at -20°C for 3 months, at 2-8°C for up to 1 week. Avoid repeated freeze/thaw cycles.

* For your safety and health, please wear a lab coat and disposable gloves when handling.

Validation Data



Recombinant Mouse Serpin F1/PEDF Protein was determined by SDS-PAGE under reducing conditions with Coomassie Blue.