

RP01505

Leader in Biomolecular Solutions for Life Science



# Recombinant Human GOLPH2/GOLM1 Protein

Catalog No.: RP01505 **Recombinant**

## Sequence Information

| Species      | Gene ID | Swiss Prot |
|--------------|---------|------------|
| HEK293 cells | 51280   | Q8NBJ4-1   |

### Tags

C-His

### Synonyms

C9orf155; GOLPH2; GP73; HEL46;  
PSEC0257;  
bA379P1.3;GOLM1;GOLPH2;GP73;HEL4  
6;PSEC0257;bA379P1.3

## Product Information

| Source       | Purification                            |
|--------------|---|
| HEK293 cells | ≥ 95 % as<br>determined by<br>SDS-PAGE. |

### Endotoxin

< 1 EU/μg of the protein by LAL  
method.

### Formulation

Lyophilized from a 0.22 μm filtered  
solution of PBS, pH 7.4.

### Reconstitution

Centrifuge the vial before opening.  
Reconstitute to a concentration of  
0.1-0.5 mg/mL in sterile distilled water.  
Avoid vortex or vigorously pipetting  
the protein. For long term storage, it is  
recommended to add a carrier protein  
or stabilizer (e.g. 0.1% BSA, 5% HSA,  
10% FBS or 5% Trehalose), and aliquot  
the reconstituted protein solution to  
minimize free-thaw cycles.

## Contact



[www.abclonal.com](http://www.abclonal.com)

## Background

Golgi membrane protein 1, also known as Golgi membrane protein GP73, Golgi phosphoprotein 2, and GOLM1, is a protein that belongs to the GOLM1 / CASC4 family. GOLM1 is widely expressed. It is highly expressed in the colon, prostate, trachea, and stomach. It is expressed at a lower level in testis, muscle, lymphoid tissues, white blood cells, and spleen. It is predominantly expressed by cells of the epithelial lineage. GOLM1 is expressed at a low level in the normal liver.

Expression significantly increases in virus (HBV, HCV) infected liver. Expression of GOLM1 does not increase in liver disease due to non-viral causes (alcohol-induced liver disease, autoimmune hepatitis). Increased expression in hepatocytes appears to be a general feature of advanced liver disease. In liver tissue from patients with adult giant-cell hepatitis (GCH), GOLM1 is strongly expressed in hepatocyte-derived syncytial giant cells. GOLM1 is constitutively expressed by biliary epithelial cells but not by hepatocytes.

## Basic Information

### Description

Recombinant Human GOLPH2/GOLM1 Protein is produced by HEK293 cells expression system. The target protein is expressed with sequence (Ser36-Leu401) of human GOLPH2/GOLM1 (Accession #NP\_057632.2) fused with a 6×His tag at the C-terminus.

### Bio-Activity

### Shipping

The product is shipped at ambient temperature. Upon receipt, store it immediately at the temperature recommended below.

### Operational Notes

For your safety and health, please wear a lab coat and disposable gloves for handling.

### Storage

Store at -20°C. Store the lyophilized protein at -20°C to -80 °C up to 1 year from the date of receipt.

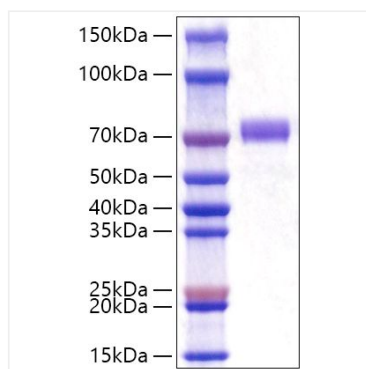
After reconstitution, the protein solution is stable at -20°C for 3 months, at 2-8°C for up to 1 week.

Avoid repeated freeze/thaw cycles.

\* For your safety and health, please wear a lab coat and disposable gloves when handling.

## Validation Data

---



Recombinant Human  
GOLPH2/GOLM1 Protein was  
determined by SDS-PAGE under  
reducing conditions with Coomassie  
Blue.