

RP01402

Leader in Biomolecular Solutions for Life Science



Recombinant Human CCL21 Protein

Catalog No.: RP01402 **Recombinant**

Sequence Information

Species	Gene ID	Swiss Prot
<i>E. coli</i>	6366	O00585

Tags

No tag

Synonyms

CCL21;6Ckine;CKb9;ECL;SCYA21;SLC;TC A4

Product Information

Source	Purification
<i>E. coli</i>	≥ 85 % as determined by SDS-PAGE.

Endotoxin

Please contact us for more information.

Formulation

Lyophilized from a 0.22 µm filtered solution of PBS, pH 7.4.

Reconstitution

Centrifuge the vial before opening. Reconstitute to a concentration of 0.1-0.5 mg/mL in sterile distilled water. Avoid vortex or vigorously pipetting the protein. For long term storage, it is recommended to add a carrier protein or stabilizer (e.g. 0.1% BSA, 5% HSA, 10% FBS or 5% Trehalose), and aliquot the reconstituted protein solution to minimize free-thaw cycles.

Contact



www.abclonal.com

Background

Chemokines are a family of small chemotactic cytokines, or proteins secreted by cells. Chemokines share the same structure similarities such as small size, and the presence of four cysteine residues in conserved locations in order to form their 3-dimensional shape. Some of the chemokines are considered pro-inflammatory which can be induced to recruit cells of the immune system to a site of infection during an immune response, while others are considered homeostatic and are implied in controlling the migration of cells during normal processes of tissue maintenance and development. There are four members of the chemokine family: C-C chemokines, C chemokines, CXC chemokines and CX3C chemokines. The C-C chemokines have two cysteines nearby the amino terminus. There have been at least 27 distinct members of this subgroup reported for mammals, called C-C chemokine ligands-1 to 28. Chemokine ligand 21(CCL21), also known as 6Ckine, exodus-2, and secondary lymphoid-tissue chemokine(SLC), is a small cytokine belonging to the C-C chemokine family. CCL21 takes its name 6Ckine for its constitutively six conserved cysteine residues but not four cysteines typical to chemokines. CCL21 has function in inducing vigorous calcium migrations and chemotactic responses.

Basic Information

Description

Recombinant Human CCL21 Protein is produced by *E. coli* expression system. The target protein is expressed with sequence (Ser24-Pro134) of human CCL21/6Ckine (Accession #NP_002980.1) fused with no additional amino acid.

Bio-Activity

Shipping

The product is shipped at ambient temperature. Upon receipt, store it immediately at the temperature recommended below.

Operational Notes

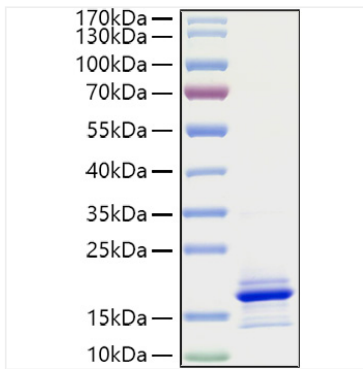
For your safety and health, please wear a lab coat and disposable gloves for handling.

Storage

Store at -20°C. Store the lyophilized protein at -20°C to -80 °C up to 1 year from the date of receipt. After reconstitution, the protein solution is stable at -20°C for 3 months, at 2-8°C for up to 1 week. Avoid repeated freeze/thaw cycles.

* For your safety and health, please wear a lab coat and disposable gloves when handling.

Validation Data



Recombinant Human CCL21 Protein was determined by SDS-PAGE under reducing conditions with Coomassie Blue.