

RP01352

Leader in Biomolecular Solutions for Life Science



Recombinant Human APLP-1 Protein

Catalog No.: RP01352 **Recombinant**

Sequence Information

Species	Gene ID	Swiss Prot
HEK293 cells	333	P51693

Tags

C-His

Synonyms

APLP1;APLP

Product Information

Source	Purification
HEK293 cells	≥ 95 % as determined by SDS-PAGE.

Endotoxin

< 0.1 EU/μg of the protein by LAL method.

Formulation

Lyophilized from a 0.22 μm filtered solution of PBS, pH 7.4.

Reconstitution

Centrifuge the vial before opening. Reconstitute to a concentration of 0.1-0.5 mg/mL in sterile distilled water. Avoid vortex or vigorously pipetting the protein. For long term storage, it is recommended to add a carrier protein or stabilizer (e.g. 0.1% BSA, 5% HSA, 10% FBS or 5% Trehalose), and aliquot the reconstituted protein solution to minimize free-thaw cycles.

Contact



www.abclonal.com

Background

APLP1, also known as amyloid-like protein 1, is a member of the highly conserved amyloid precursor protein gene family. APLP1 is a membrane-associated glycoprotein that is cleaved by secretases in a manner similar to amyloid beta A4 precursor protein cleavage. APLP1, together with APLP2, are important modulators of glucose. APLP1 may also play a role in synaptic maturation during cortical development. Alternatively spliced transcript variants encoding different isoforms have been described. APLP1 also is a mammalian homologue of amyloid precursor protein (APP). APP is a type I membrane protein that is genetically linked to Alzheimer's disease.

Basic Information

Description

Recombinant Human APLP-1 Protein is produced by HEK293 cells expression system. The target protein is expressed with sequence (Ser39-Glu580) of human APLP1 (Accession #NP_005157.1) fused with a 6×His tag at the C-terminus.

Bio-Activity

Shipping

The product is shipped at ambient temperature. Upon receipt, store it immediately at the temperature recommended below.

Operational Notes

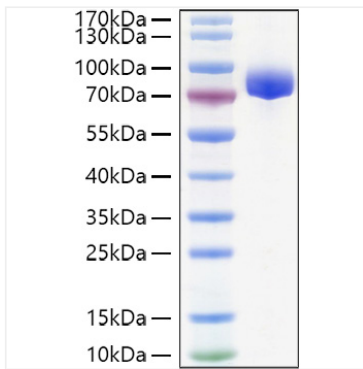
For your safety and health, please wear a lab coat and disposable gloves for handling.

Storage

Store at -20°C. Store the lyophilized protein at -20°C to -80 °C up to 1 year from the date of receipt. After reconstitution, the protein solution is stable at -20°C for 3 months, at 2-8°C for up to 1 week. Avoid repeated freeze/thaw cycles.

* For your safety and health, please wear a lab coat and disposable gloves when handling.

Validation Data



Recombinant Human APLP-1 Protein was determined by SDS-PAGE under reducing conditions with Coomassie Blue.