

RP01277

Leader in Biomolecular Solutions for Life Science



Recombinant Human ACE-2 Protein

Catalog No.: RP01277 **Recombinant** **1 Publications**

Sequence Information

Species	Gene ID	Swiss Prot
HEK293 cells	59272	Q9BYF1

Tags

N-His

Synonyms

ACE2; ACEH; angiotensin-converting enzyme 2;ACEH

Product Information

Source	Purification
HEK293 cells	≥ 95 % as determined by SDS-PAGE.

Endotoxin

< 0.1 EU/μg of the protein by LAL method.

Formulation

Lyophilized from a 0.22 μm filtered solution of PBS, pH 7.4. Contact us for customized product form or formulation.

Reconstitution

Centrifuge the vial before opening. Reconstitute to a concentration of 0.1-0.5 mg/mL in sterile distilled water. Avoid vortex or vigorously pipetting the protein. For long term storage, it is recommended to add a carrier protein or stabilizer (e.g. 0.1% BSA, 5% HSA, 10% FBS or 5% Trehalose), and aliquot the reconstituted protein solution to minimize free-thaw cycles.

Contact



www.abclonal.com

Background

Basic Information

Description

Recombinant Human ACE-2 Protein is produced by HEK293 cells expression system. The target protein is expressed with sequence (Gln18-Ser740) of human ACE2 (Accession #Q9BYF1) fused with a 6×His tag at the N-terminus.

Bio-Activity

Measured by its binding ability in a functional ELISA. Immobilized recombinant Human ACE2 at 2 μg/mL (100 μL/well) can bind recombinant SARS-COV-2 S1 Protein with a linear range of 0.49-9.31 ng/mL.

Shipping

The product is shipped at ambient temperature. Upon receipt, store it immediately at the temperature recommended below.

Operational Notes

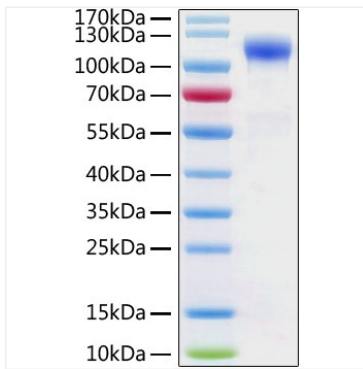
For your safety and health, please wear a lab coat and disposable gloves for handling.

Storage

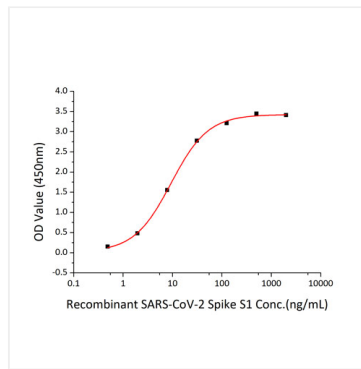
Store at -20°C. Store the lyophilized protein at -20°C to -80 °C up to 1 year from the date of receipt. After reconstitution, the protein solution is stable at -20°C for 3 months, at 2-8°C for up to 1 week. Avoid repeated freeze/thaw cycles.

* For your safety and health, please wear a lab coat and disposable gloves when handling.

Validation Data



Recombinant Human ACE-2 Protein was determined by SDS-PAGE under reducing conditions with Coomassie Blue.



Immobilized recombinant Human ACE2-His at 2 μ g/mL (100 μ L/well) can bind recombinant SARS-COV-2 S1-mFc Protein with a linear range of 0.49-9.31 ng/mL.