

RP01241LQ

Leader in Biomolecular Solutions for Life Science



# Recombinant Human Catenin beta-1/CTNNB1 Protein

Catalog No.: RP01241LQ

Recombinant

## Sequence Information

| Species        | Gene ID | Swiss Prot |
|----------------|---------|------------|
| <I>E. coli</I> | 1499    | P35222-1   |

### Tags

C-His

### Synonyms

CTNNB; MRD19; armadillo;CTNNB1;MRD19;armadillo;beta Catenin; CTNNB; catenin beta-1

## Product Information

| Source         | Purification       |
|----------------|--------------------|
| <I>E. coli</I> | > 92% by SDS-PAGE. |

### Endotoxin

< 0.1 EU/μg of the protein by LAL method.

### Formulation

Supplied as a 0.22 μm filtered solution in 20mM Hepes,150mM NaCl, 10% Glycerol, 5mM DTT,pH 7.5.Contact us for customized product form or formulation.

### Reconstitution

## Background

## Basic Information

### Description

Recombinant Human Catenin beta-1/CTNNB1 Protein is produced by <I>E. coli</I> expression system. The target protein is expressed with sequence (Met1-Leu781) of human Beta-catenin (Accession #XP\_016861227.1) fused with a 6×His tag at the C-terminus.

### Bio-Activity

1.Measured by its binding ability in a functional ELISA.Immobilized Human CD31 at 1 μg/mL (100 μL/well) can bind Human CTNNB1 with a linear range of 0.2-1.5 μg/mL.[2.Measured by its binding ability in a functional ELISA.Immobilized Human CDH1 at 1 μg/mL (100 μL/well) can bind Human CTNNB1 with a linear range of 0.1-0.78 μg/mL.

### Storage

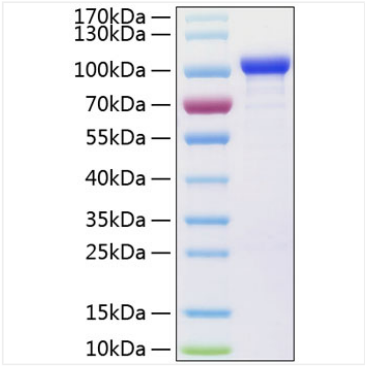
Store at -70°C. This product is stable at ≤ -70°C for up to 1 year from the date of receipt. For optimal storage, aliquot into smaller quantities after centrifugation and store at recommended temperature. Avoid repeated freeze-thaw cycles. Avoid repeated freeze/thaw cycles.

## Contact

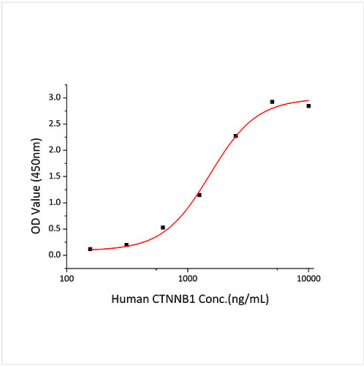


[www.abclonal.com](http://www.abclonal.com)

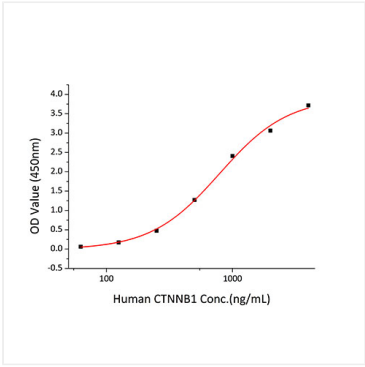
# Validation Data



Recombinant Human Catenin beta-1 Protein was determined by SDS-PAGE with Coomassie Blue, showing a band at 100-110 kDa.



Immobilized recombinant Human CD31 at 1 µg/mL (100 µL/well) can bind Human CTNNB1 with a linear range of 0.2-1.5µg/mL.



Immobilized recombinant Human CDH1 at 1 µg/mL (100 µL/well) can bind Human CTNNB1 with a linear range of 0.1-0.78µg/mL.