

RP01229

Leader in Biomolecular Solutions for Life Science



# Recombinant Human CD24 Protein

Catalog No.: RP01229 **Recombinant**

## Sequence Information

Species	Gene ID	Swiss Prot
HEK293 cells	100133941	P25063

### Tags

C-hFc

### Synonyms

CD24;CD24A;CD24 molecule;CD247

## Product Information

### Source

HEK293 cells

### Purification

≥ 95 % as determined by SDS-PAGE; ≥95 % as determined by HPLC.

### Endotoxin

< 0.1 EU/μg of the protein by LAL method.

### Formulation

Lyophilized from a 0.22 μm filtered solution of PBS, pH 7.4. Contact us for customized product form or formulation.

### Reconstitution

Centrifuge the vial before opening. Reconstitute to a concentration of 0.1-0.5 mg/mL in sterile distilled water. Avoid vortex or vigorously pipetting the protein. For long term storage, it is recommended to add a carrier protein or stabilizer (e.g. 0.1% BSA, 5% HSA, 10% FBS or 5% Trehalose), and aliquot the reconstituted protein solution to minimize free-thaw cycles.

## Contact



[www.abclonal.com](http://www.abclonal.com)

## Background

### Basic Information

#### Description

Recombinant Human CD24 Protein is produced by HEK293 cells expression system. The target protein is expressed with sequence (Met1-Gly59) of human CD24 (Accession #NP\_037362) fused with a Fc tag at the C-terminus.

#### Bio-Activity

Measured by its binding ability in a functional ELISA. Immobilized Human CD24 at 2 μg/mL (100 μL/well) can bind Human Siglec10 with a linear range of 1-764 ng/mL.<sup>[2]</sup> Measured by its binding ability in a functional ELISA. Immobilized PE Mouse Anti-Human CD24 at 1 μg/mL (25 μL/well) can bind Human CD24 with a linear range of 0.46-28.4 ng/mL.

#### Shipping

The product is shipped at ambient temperature. Upon receipt, store it immediately at the temperature recommended below.

#### Operational Notes

For your safety and health, please wear a lab coat and disposable gloves for handling.

#### Storage

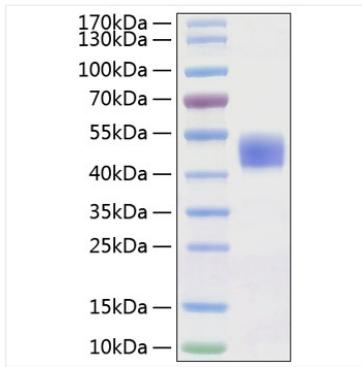
Store at -20°C. Store the lyophilized protein at -20°C to -80 °C up to 1 year from the date of receipt.

After reconstitution, the protein solution is stable at -20°C for 3 months, at 2-8°C for up to 1 week.

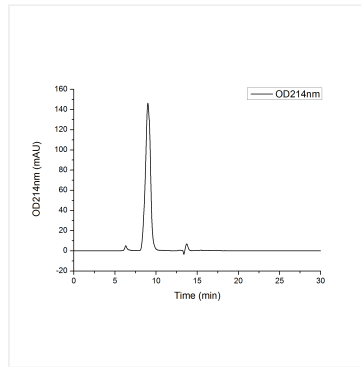
Avoid repeated freeze/thaw cycles.

\* For your safety and health, please wear a lab coat and disposable gloves when handling.

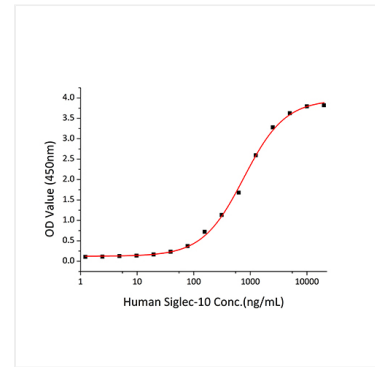
## Validation Data



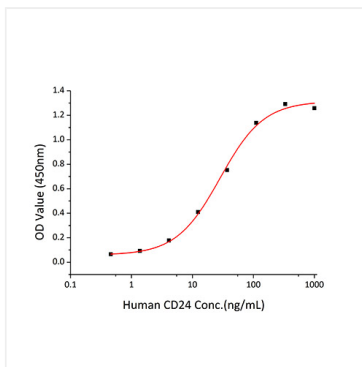
Recombinant Human CD24 Protein was determined by SDS-PAGE under reducing conditions with Coomassie Blue.



The purity of human CD24 Protein (Cat.RP01229) was greater than 95% as determined by SEC-HPLC.



Immobilized Human CD24 at 2  $\mu\text{g/mL}$  (100  $\mu\text{L/well}$ ) can bind Human Siglec10 with a linear range of 1-764 ng/mL.



Immobilized PE Mouse Anti-Human CD24 at 1  $\mu\text{g/mL}$  (25  $\mu\text{L/well}$ ) can bind Human CD24 with a linear range of 0.46-28.4 ng/mL.