

RP01216S

Leader in Biomolecular Solutions for Life Science



# Recombinant Mouse CSF-1/M-CSF Protein

Catalog No.: RP01216S

Recombinant

## Sequence Information

Species	Gene ID	Swiss Prot
HEK293 cells	12977	P07141-1

### Tags

No-Tag

### Synonyms

M-CSF;M-CSF;CSF-1;Lanimoestim;CSF1

## Product Information

### Source

### Purification

≥ 90% as determined by SDS-PAGE.

### Endotoxin

< 0.01 EU/μg of the protein by LAL method

### Formulation

Lyophilized from a 0.22 μm filtered solution of PBS, pH 7.4.

### Reconstitution

Centrifuge the vial before opening. Reconstitute to a concentration of 0.1-0.5 mg/mL in sterile distilled water. Avoid vortex or vigorously pipetting the protein. For long term storage, it is recommended to add a carrier protein or stabilizer (e.g. 0.1% BSA, 5% HSA, 10% FBS or 5% Trehalose), and aliquot the reconstituted protein solution to minimize free-thaw cycles.

## Contact



[www.abclonal.com](http://www.abclonal.com)

## Background

Macrophage colony-stimulating factor 1, also known as CSF-1, M-CSF, is a single-pass membrane protein which is disulfide-linked as a homodimer or heterodimer. Granulocyte / macrophage colony-stimulating factors are cytokines that act in hematopoiesis by controlling the production, differentiation, and function of 2 related white cell populations of the blood, the granulocytes and the monocytes-macrophages. M-CSF/CSF-1 is known to facilitate monocyte survival, monocyte-to-macrophage conversion, and macrophage proliferation. M-CSF/CSF-1 is a secreted cytokine which influences hemopoietic stem cells to differentiate into macrophages or other related cell types. It binds to the Colony stimulating factor 1 receptor. M-CSF/CSF-1 may also be involved in development of the placenta. The active form of M-CSF/CSF-1 is found extracellularly as a disulfide-linked homodimer, and is thought to be produced by proteolytic cleavage of membrane-bound precursors. M-CSF/CSF-1 induces cells of the monocyte/macrophage lineage. It

## Basic Information

### Description

Recombinant Mouse CSF-1/M-CSF Protein is produced by HEK293 cells expression system. The target protein is expressed with sequence ( Met1-Pro187 ) of Mouse CSF-1/M-CSF (Accession #NP\_031804.3.) fused with No-tag.

### Bio-Activity

Measured in a cell proliferation assay using M-NFS-60 mouse myelogenous leukemia lymphoblast cells. The ED<sub>50</sub> for this effect is 3.76-15.16 ng/mL, corresponding to a specific activity of 6.6×10<sup>4</sup>~2.65×10<sup>5</sup> units/mg.

### Shipping

The product is shipped at ambient temperature. Upon receipt, store it immediately at the temperature recommended below.

### Operational Notes

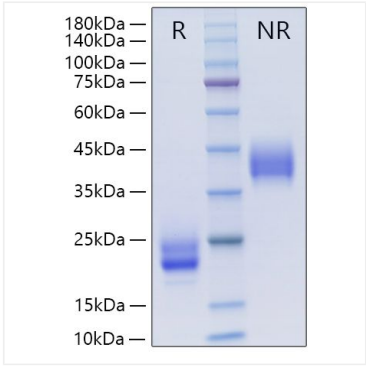
For your safety and health, please wear a lab coat and disposable gloves for handling.

### Storage

Store at -20°C. Store the lyophilized protein at -20°C to -80 °C up to 1 year from the date of receipt. After reconstitution, the protein solution is stable at -20°C for 3 months, at 2-8°C for up to 1 week. Avoid repeated freeze/thaw cycles.

\* For your safety and health, please wear a lab coat and disposable gloves when handling.

# Validation Data



Recombinant Mouse CSF-1/M-CSF Protein was determined by SDS-PAGE under reducing (R) and non-reducing (NR) conditions.