

RP01210

Leader in Biomolecular Solutions for Life Science



# Recombinant Human EphA7/EHK-3 Protein

Catalog No.: RP01210 **Recombinant**

## Sequence Information

Species	Gene ID	Swiss Prot
HEK293 cells	2045	Q15375

### Tags

C-His

### Synonyms

EPHA7;EHK-3;EHK3;EK11;HEK11

## Product Information

Source	Purification
HEK293 cells	> 97% by SDS-PAGE.

### Endotoxin

< 0.1 EU/μg of the protein by LAL method.

### Formulation

Lyophilized from a 0.22 μm filtered solution of PBS, pH 7.4. Contact us for customized product form or formulation.

### Reconstitution

Centrifuge the vial before opening. Reconstitute to a concentration of 0.1-0.5 mg/mL in sterile distilled water. Avoid vortex or vigorously pipetting the protein. For long term storage, it is recommended to add a carrier protein or stabilizer (e.g. 0.1% BSA, 5% HSA, 10% FBS or 5% Trehalose), and aliquot the reconstituted protein solution to minimize free-thaw cycles.

## Background

## Basic Information

### Description

Recombinant Human EphA7/EHK-3 Protein is produced by HEK293 cells expression system. The target protein is expressed with sequence (Met1 - Val555) of human EphA7 (Accession #NP\_004431) fused with a 6×His tag at the C-terminus.

### Bio-Activity

Measured by its binding ability in a functional ELISA. Immobilized Human EphA7 at 0.5 μg/mL (100 μL/well) can bind Human EFNA4 with a linear range of 0.039-0.942 ng/mL.

### Storage

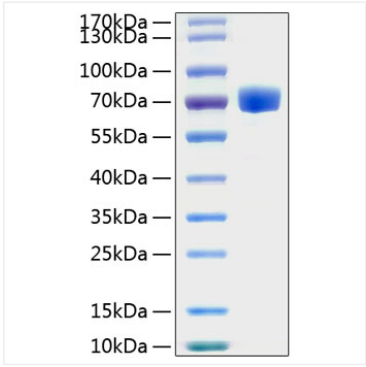
Store at -20°C. Store the lyophilized protein at -20°C to -80 °C up to 1 year from the date of receipt. After reconstitution, the protein solution is stable at -20°C for 3 months, at 2-8°C for up to 1 week. Avoid repeated freeze/thaw cycles.

## Contact

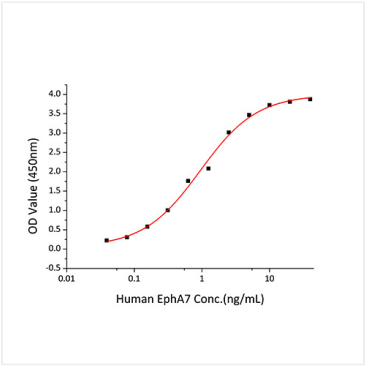


[www.abclonal.com](http://www.abclonal.com)

Validation Data



Recombinant Human EphA7/EHK-3 Protein was determined by SDS-PAGE with Coomassie Blue, showing a band at 70-80 kDa.



Immobilized Human EphA7 at 0.5  $\mu\text{g/mL}$  (100  $\mu\text{L}$ /well) can bind Human EFNA4 with a linear range of 0.039-0.942 ng/mL.