

RP01207

Leader in Biomolecular Solutions for Life Science



Recombinant Rat CSF-2/GM-CSF Protein

Catalog No.: RP01207 **Recombinant**

Sequence Information

Species	Gene ID	Swiss Prot
HEK293 cells	116630	P48750

Tags

N-His

Synonyms

GMCSF;CSF2

Product Information

Source	Purification
HEK293 cells	≥ 95 % as determined by SDS-PAGE.

Endotoxin

< 1 EU/μg of the protein by LAL method.

Formulation

Lyophilized from a 0.22 μm filtered solution of PBS, pH 7.4. Contact us for customized product form or formulation.

Reconstitution

Centrifuge the vial before opening. Reconstitute to a concentration of 0.1-0.5 mg/mL in sterile distilled water. Avoid vortex or vigorously pipetting the protein. For long term storage, it is recommended to add a carrier protein or stabilizer (e.g. 0.1% BSA, 5% HSA, 10% FBS or 5% Trehalose), and aliquot the reconstituted protein solution to minimize freeze-thaw cycles.

Contact



www.abclonal.com

Background

Basic Information

Description

Recombinant Rat CSF-2/GM-CSF Protein is produced by HEK293 cells expression system. The target protein is expressed with sequence (Ala18-Lys144) of rat GM-CSF/CSF2 (Accession #NP_446304.1.) fused with a 6×His tag at the N-terminus.

Bio-Activity

Measured in a cell proliferation assay using SP2/O mouse myeloma cells. The ED₅₀ for this effect is 7.5-30 pg/mL.

Shipping

The product is shipped at ambient temperature. Upon receipt, store it immediately at the temperature recommended below.

Operational Notes

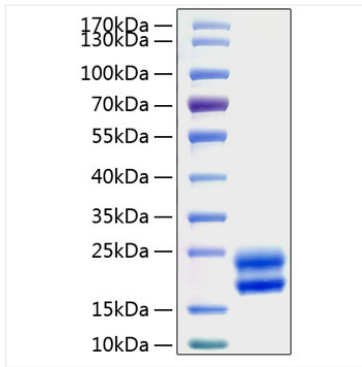
For your safety and health, please wear a lab coat and disposable gloves for handling.

Storage

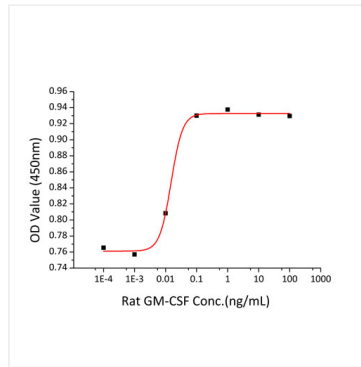
Store at -20°C. Store the lyophilized protein at -20°C to -80 °C up to 1 year from the date of receipt. After reconstitution, the protein solution is stable at -20°C for 3 months, at 2-8°C for up to 1 week. Avoid repeated freeze/thaw cycles.

* For your safety and health, please wear a lab coat and disposable gloves when handling.

Validation Data



Recombinant Rat CSF-2/GM-CSF Protein was determined by SDS-PAGE under reducing conditions with Coomassie Blue.



Recombinant Rat GM-CSF/CSF2 promotes the proliferation of SP2/O mouse myeloma cells. The ED₅₀ for this effect is 7.5-30 µg/mL.