

RP01204

Leader in Biomolecular Solutions for Life Science



Recombinant Human CADM1/IGSF4A Protein

Catalog No.: RP01204 **Recombinant**

Sequence Information

Species	Gene ID	Swiss Prot
HEK293 cells	23705	Q9BY67

Tags

C-His

Synonyms

CADM1;BL2;IGSF4;IGSF4A;NECL2;Necl-2;RA175;ST17;SYNCAM;TSLC1;sTSLC-1;sgIGSF;synCAM1

Product Information

Source	Purification
HEK293 cells	> 97% by SDS-PAGE.

Endotoxin

< 0.1 EU/μg of the protein by LAL method.

Formulation

Lyophilized from a 0.22 μm filtered solution of PBS, pH 7.4. Contact us for customized product form or formulation.

Reconstitution

Centrifuge the vial before opening. Reconstitute to a concentration of 0.1-0.5 mg/mL in sterile distilled water. Avoid vortex or vigorously pipetting the protein. For long term storage, it is recommended to add a carrier protein or stabilizer (e.g. 0.1% BSA, 5% HSA, 10% FBS or 5% Trehalose), and aliquot the reconstituted protein solution to minimize free-thaw cycles.

Background

Basic Information

Description

Recombinant Human CADM1/IGSF4A Protein is produced by HEK293 cells expression system. The target protein is expressed with sequence (Gln45-His374) of human CADM1/IGSF4A (Accession #NP_055148.3) fused with a 6×His tag at the C-terminus.

Bio-Activity

Measured by its binding ability in a functional ELISA. Immobilized Human CADM1 at 2 μg/mL (100 μL/well) can bind Human CRTAM (Catalog #RP02670) with a linear range of 0.49-1.78 μg/mL.

Storage

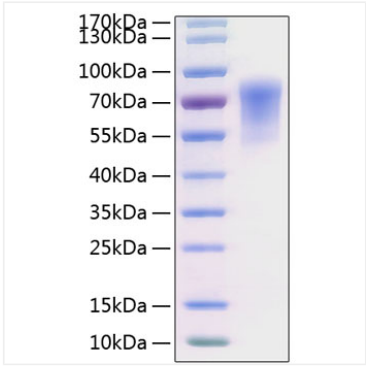
Store at -20°C. Store the lyophilized protein at -20°C to -80 °C up to 1 year from the date of receipt. After reconstitution, the protein solution is stable at -20°C for 3 months, at 2-8°C for up to 1 week. Avoid repeated freeze/thaw cycles.

Contact



www.abclonal.com

Validation Data



Recombinant Human
CADM1/IGSF4A Protein was
determined by SDS-PAGE under
reducing conditions with Coomassie
Blue.