

RP01190

Leader in Biomolecular Solutions for Life Science



Recombinant Human LYPD3 Protein

Catalog No.: RP01190 **Recombinant**

Sequence Information

| Species | Gene ID | Swiss Prot |
|--------------|---------|------------|
| HEK293 cells | 27076 | O95274 |

Tags

C-His

Synonyms

LYPD3;C4.4A

Product Information

| Source | Purification |
|--------------|-----------------------------------|
| HEK293 cells | ≥ 95 % as determined by SDS-PAGE. |

Endotoxin

< 0.1 EU/μg of the protein by LAL method.

Formulation

Lyophilized from a 0.22 μm filtered solution of PBS, pH 7.4. Contact us for customized product form or formulation.

Reconstitution

Centrifuge the vial before opening. Reconstitute to a concentration of 0.1-0.5 mg/mL in sterile distilled water. Avoid vortex or vigorously pipetting the protein. For long term storage, it is recommended to add a carrier protein or stabilizer (e.g. 0.1% BSA, 5% HSA, 10% FBS or 5% Trehalose), and aliquot the reconstituted protein solution to minimize freeze-thaw cycles.

Contact



www.abclonal.com

Background

Basic Information

Description

Recombinant Human LYPD3 Protein is produced by HEK293 cells expression system. The target protein is expressed with sequence (Leu31-His286) of human LYPD3/C4.4A (Accession #NP_055215.2.) fused with a 6×His tag at the C-terminus.

Bio-Activity

Measured by its binding ability in a functional ELISA. Immobilized Human LYPD3 Protein at 1μg/mL (100 μL/well) can bind LYPD3 Rabbit pAb with a linear range of 0.06-3.84 ng/mL.

Shipping

The product is shipped at ambient temperature. Upon receipt, store it immediately at the temperature recommended below.

Operational Notes

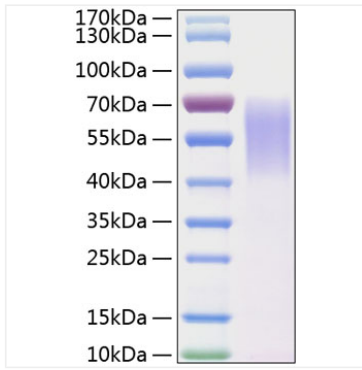
For your safety and health, please wear a lab coat and disposable gloves for handling.

Storage

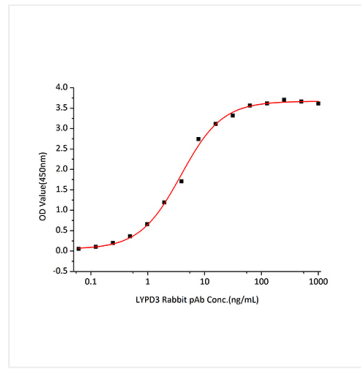
Store at -20°C. Store the lyophilized protein at -20°C to -80 °C up to 1 year from the date of receipt. After reconstitution, the protein solution is stable at -20°C for 3 months, at 2-8°C for up to 1 week. Avoid repeated freeze/thaw cycles.

* For your safety and health, please wear a lab coat and disposable gloves when handling.

Validation Data



Recombinant Human LYPD3 Protein was determined by SDS-PAGE under reducing conditions with Coomassie Blue.



Immobilized Human LYPD3 Protein at $1\mu\text{g/mL}$ ($100\mu\text{L/well}$) can bind LYPD3 Rabbit pAb with a linear range of 0.06-3.84 ng/mL.