

RP01081

Leader in Biomolecular Solutions for Life Science



# Recombinant Human CD6 Protein

Catalog No.: RP01081

Recombinant

## Sequence Information

Species	Gene ID	Swiss Prot
HEK293 cells	923	P30203

### Tags

C-hFc&His

### Synonyms

CD6;TP120

## Product Information

Source	Purification
HEK293 cells	≥ 90 % as determined by SDS-PAGE.

### Endotoxin

< 0.1 EU/μg of the protein by LAL method.

### Formulation

Lyophilized from a 0.22 μm filtered solution of PBS, pH 7.4. Contact us for customized product form or formulation.

### Reconstitution

Centrifuge the vial before opening. Reconstitute to a concentration of 0.1-0.5 mg/mL in sterile distilled water. Avoid vortex or vigorously pipetting the protein. For long term storage, it is recommended to add a carrier protein or stabilizer (e.g. 0.1% BSA, 5% HSA, 10% FBS or 5% Trehalose), and aliquot the reconstituted protein solution to minimize free-thaw cycles.

## Background

### Basic Information

#### Description

Recombinant Human CD6 Protein is produced by HEK293 cells expression system. The target protein is expressed with sequence (His18-Glu398) of human CD6 (Accession #NP\_006716.3) fused with an Fc, 6×His tag at the C-terminus.

#### Bio-Activity

1. Measured by its binding ability in a functional ELISA. Immobilized Human CD166 at 1 μg/mL (100 μL/well) can bind Human CD6 with a linear range of 4-389 ng/mL. 2. Measured by the ability of the immobilized protein to support the adhesion of Jurkat human acute T cell leukemia cells. When 8×10<sup>4</sup> cells/well are added to CD6 coated plates (5 μg/mL and 100 μL/well) in the presence of 10 μg/mL PHA, approximately 60-70% cells will adhere specifically after 60 minutes at 37°C.

#### Shipping

The product is shipped at ambient temperature. Upon receipt, store it immediately at the temperature recommended below.

#### Operational Notes

For your safety and health, please wear a lab coat and disposable gloves for handling.

#### Storage

Store at -20°C. Store the lyophilized protein at -20°C to -80 °C up to 1 year from the date of receipt. After reconstitution, the protein solution is stable at -20°C for 3 months, at 2-8°C for up to 1 week. Avoid repeated freeze/thaw cycles.

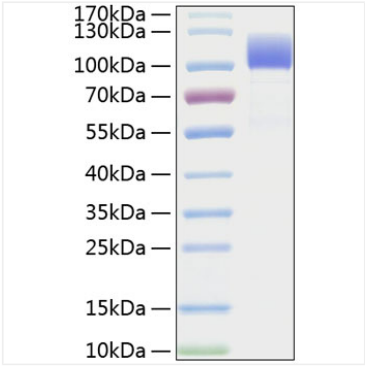
## Contact



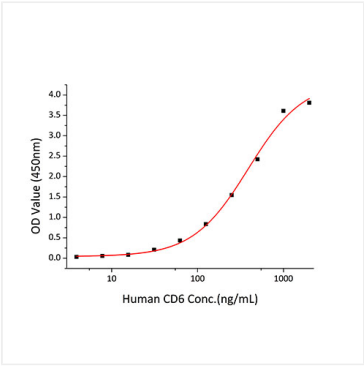
[www.abclonal.com](http://www.abclonal.com)

\* For your safety and health, please wear a lab coat and disposable gloves when handling.

Validation Data



Recombinant Human CD6 Protein was determined by SDS-PAGE under reducing conditions with Coomassie Blue.



Immobilized recombinant Human CD166 at 1  $\mu$ g/mL (100  $\mu$ L/well) can bind Human CD6 with a linear range of 4-389ng/mL.