

RP00915

Leader in Biomolecular Solutions for Life Science



Recombinant Human Insulin-like 3/INSL3 Protein

Catalog No.: RP00915 **Recombinant**

Sequence Information

Species	Gene ID	Swiss Prot
HEK293 cells	3640	P51460

Tags

C-6×His

Synonyms

INSL3;RLF;RLNL;ley-I-L

Product Information

Source	Purification
HEK293 cells	≥ 95 % as determined by SDS-PAGE.

Endotoxin

< 1 EU/μg of the protein by LAL method.

Formulation

Lyophilized from a 0.2 μm filtered solution of 20mM PB,150mM NaCl,pH7.4.Contact us for customized product form or formulation.

Reconstitution

Reconstitute to a concentration of 0.1-0.5 mg/mL in sterile distilled water.

Background

Basic Information

Description

Recombinant Human Insulin-like 3/INSL3 Protein is produced by Human cells expression system. The target protein is expressed with sequence (Leu21-Tyr131) of human INSL3/Insulin-like 3 (Accession #P51460) fused with a 6×His tag at the C-terminus.

Bio-Activity

Shipping

The product is shipped at ambient temperature. Upon receipt, store it immediately at the temperature recommended below.

Operational Notes

For your safety and health, please wear a lab coat and disposable gloves for handling.

Storage

Store at -20°C.Store the lyophilized protein at -20°C to -80 °C up to 1 year from the date of receipt.
After reconstitution, the protein solution is stable at -20°C for 3 months, at 2-8°C for up to 1 week.
Avoid repeated freeze/thaw cycles.

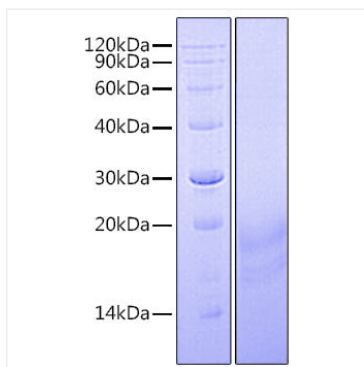
Contact



www.abclonal.com

* For your safety and health, please wear a lab coat and disposable gloves when handling.

Validation Data



Recombinant Human Insulin-like 3/INSL3 Protein was determined by SDS-PAGE under reducing conditions with Coomassie Blue.