

RP00793

Leader in Biomolecular Solutions for Life Science



Recombinant Human CD157/BST1/ADP-ribosyl cyclase 2/Cyclic ADP-ribose hydrolase 2 Protein

Catalog No.: RP00793

Recombinant

Sequence Information

Species	Gene ID	Swiss Prot
Human	683	Q10588

Tags

C-Fc

Synonyms

BST1;CD157

Background

CD157, as known as cyclic ADP-ribose hydrolase 2, ADP-ribosyl cyclase 2, Bone marrow stromal antigen 1, Cyclic ADP-ribose hydrolase 2, is a glycosyl phosphatidylinositol anchored membrane protein that belongs to the ADP-ribosyl cyclase family. This protein synthesizes the second messengers cyclic ADP-ribose and nicotinate-adenine dinucleotide phosphate, the former is a second messenger that elicits calcium release from intracellular stores. CD157 may also be involved in pre-B-cell growth. It may play a role in rheumatoid arthritis (RA) due to its enhanced expression in RA derived bone marrow stromal cell lines. Also, CD157 has been predicted to function as a cell surface receptor and an immunoregulatory molecule.

Product Information

Source	Purification
HEK293 cells	> 95% by SDS-PAGE.

Endotoxin

< 1 EU/μg of the protein by LAL method.

Formulation

Lyophilized from a 0.2 μm filtered solution of 20mM Tris, 150mM NaCl, PH8.0. Contact us for customized product form or formulation.

Reconstitution

Reconstitute to a concentration of 0.1-0.5 mg/mL in sterile distilled water.

Basic Information

Description

Recombinant Human CD157/BST1/ADP-ribosyl cyclase 2/Cyclic ADP-ribose hydrolase 2 Protein is produced by Human Cells expression system. The target protein is expressed with sequence (Gly29-Lys292) of human CD157/BST1/ADP-ribosyl cyclase 2/Cyclic ADP-ribose hydrolase 2 (Accession #Q10588) fused with an Fc tag at the C-terminus.

Bio-Activity

Storage

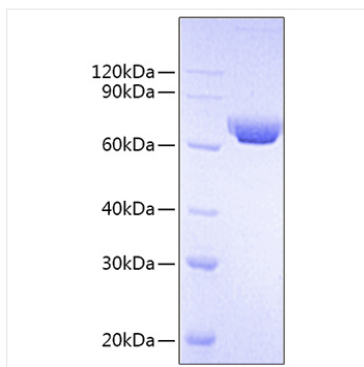
Store the lyophilized protein at -20°C to -80 °C for long term. After reconstitution, the protein solution is stable at -20 °C for 3 months, at 2-8 °C for up to 1 week. Avoid repeated freeze/thaw cycles.

Contact



www.abclonal.com

Validation Data



Recombinant Human
CD157/BST1/ADP-ribosyl cyclase
2/Cyclic ADP-ribose hydrolase 2
Protein was determined by SDS-
PAGE under reducing conditions with
Coomassie Blue.