

RP00616

Leader in Biomolecular Solutions for Life Science



Recombinant Mouse IL-6 Protein

Catalog No.: RP00616

Recombinant

Sequence Information

Species	Gene ID	Swiss Prot
Mouse	16193	P08505

Tags

No tag

Synonyms

IL6;Interleukin-6;BSF2;HSF;IFNB2;IL6

Product Information

Source

<I>E. coli</I>

Purification

> 95% by SDS-PAGE.

Endotoxin

< 1 EU/μg of the protein by LAL method.

Formulation

Lyophilized from a 0.2 μM filtered solution of 20mM PB,150mM NaCl,pH7.4Contact us for customized product form or formulation.

Reconstitution

Reconstitute to a concentration of 0.1-0.5 mg/mL in 1X PBS.

Background

Interleukin-6 (IL-6) is a pro-inflammatory cytokine that also has an important role in immunity. Mouse IL-6 appears to be directly involved in the responses that occur after infection and injury and may prove to be as important as IL-1 in regulating the acute phase response. Mouse IL-6 is reported to be produced by fibroblasts, activated T cells, activated monocytes or macrophages, and endothelial cells. It acts upon a variety of cells, including fibroblasts, myeloid progenitor cells, T cells, B cells and hepatocytes. IL-6 has a wide variety of biological functions: it plays an essential role in the final differentiation of B-cells into Ig-secreting cells, it induces myeloma and plasmacytoma growth, nerve cells differentiation in hepatocytes, and acute phase reactants.

Basic Information

Description

Recombinant Mouse IL-6 Protein is produced by <I>E. coli</I> expression system. The target protein is expressed with sequence (Phe25-Thr211) of mouse IL-6 (Accession #P08505) fused with an initial Met at the N-terminus.

Bio-Activity

Storage

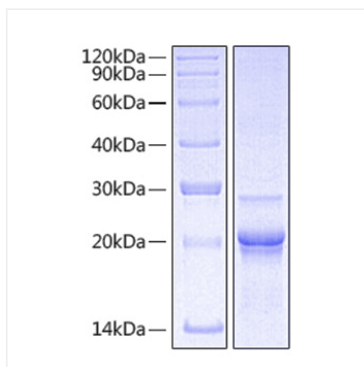
Store the lyophilized protein at -20°C to -80 °C for long term.
After reconstitution, the protein solution is stable at -20 °C for 3 months, at 2-8 °C for up to 1 week. Avoid repeated freeze/thaw cycles.

Contact



www.abclonal.com

Validation Data



Recombinant Mouse IL-6 Protein was determined by SDS-PAGE under reducing conditions with Coomassie Blue.