

RP00456

Leader in Biomolecular Solutions for Life Science



Recombinant Human PSMA/FOLH1 Protein

Catalog No.: RP00456 **Recombinant**

Sequence Information

Species	Gene ID	Swiss Prot
HEK293 cells	2346	Q04609-1

Tags

N-hFc

Synonyms

GCP2; PSMA; PSMAFGCP; FGCP; Folate hydrolase 1; FOLHNAALADase I; GCPII; GCPIImGCP; NAALAD1; NAALADase I; NAALADase; FOLH1; GIG27; PSM; FOLH; Mgcp

Product Information

Source	Purification
HEK293 cells	≥ 95 % as determined by SDS-PAGE; ≥ 95 % as determined by HPLC.

Endotoxin

< 1 EU/μg of the protein by LAL method.

Formulation

Lyophilized from 0.22 μm filtered solution in PBS (pH 7.4). Normally 8% trehalose is added as protectant before lyophilization.

Reconstitution

Centrifuge the vial before opening. Reconstitute to a concentration of 0.1-0.5 mg/mL in sterile distilled water. Avoid vortex or vigorously pipetting the protein. For long term storage, it is recommended to add a carrier protein or stabilizer (e.g. 0.1% BSA, 5% HSA, 10% FBS or 5% Trehalose), and aliquot the reconstituted protein solution to minimize free-thaw cycles.

Contact



www.abclonal.com

Background

Prostate-specific membrane antigen (PSMA) is an enzyme that in humans is encoded by the FOLH1 (folate hydrolase 1) gene, also known as Glutamate carboxypeptidase II (GCPII). Human PSMA is highly expressed in the prostate, roughly a hundred times greater than in most other tissues. In some prostate cancers, PSMA is the second-most upregulated gene product, with an 8- to 12-fold increase over levels in noncancerous prostate cells.

Basic Information

Description

Recombinant Human PSMA/FOLH1 Protein is produced by HEK293 cells expression system. The target protein is expressed with sequence (Lys44-Ala750) of Human PSMA/FOLH1 (Accession #Q04609-1) fused with hFc tag at the N-terminus.

Bio-Activity

Shipping

The product is shipped at ambient temperature. Upon receipt, store it immediately at the temperature recommended below.

Operational Notes

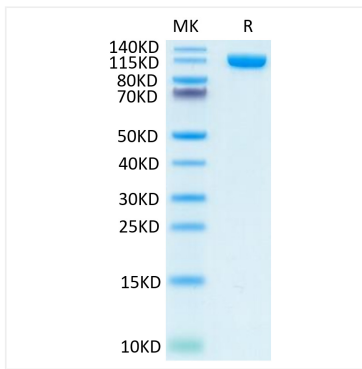
For your safety and health, please wear a lab coat and disposable gloves for handling.

Storage

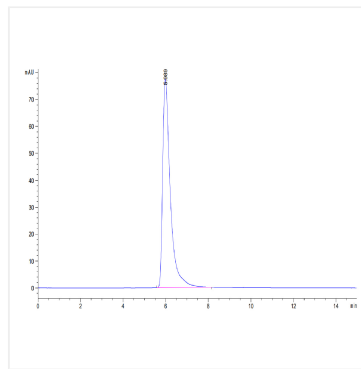
Store at -20°C. Store the lyophilized protein at -20°C to -80 °C up to 1 year from the date of receipt. After reconstitution, the protein solution is stable at -20°C for 3 months, at 2-8°C for up to 1 week. Avoid repeated freeze/thaw cycles.

* For your safety and health, please wear a lab coat and disposable gloves when handling.

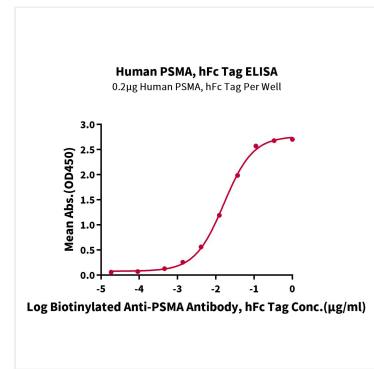
Validation Data



Recombinant Human PSMA/FOLH1 Protein was determined by Tris-Bis PAGE under reducing conditions.



The purity of Human PSMA is greater than 95% as determined by SEC-HPLC.



Immobilized Human PSMA, hFc Tag at $2 \mu\text{g/mL}$ ($100 \mu\text{L/Well}$) on the plate. Dose response curve for Biotinylated Anti-PSMA Antibody, hFc Tag with the EC_{50} of 16.3ng/mL determined by ELISA.