

RP00451

Leader in Biomolecular Solutions for Life Science



# Recombinant Human TGF-beta 1/TGFB1 Protein

Catalog No.: RP00451

Recombinant

## Sequence Information

Species	Gene ID	Swiss Prot
Human	7040	P01137

### Tags

No tag

### Synonyms

TGFB1; CED; DPD1; LAP; TGFB;  
TGFBeta; transforming growth factor  
beta-1;TGF-beta  
1;CED;DPD1;LAP;TGFB;TGFBeta;TGF-β

## Product Information

Source	Purification
HEK293 cells	> 95% by SDS- PAGE.

### Endotoxin

< 1 EU/μg of the protein by LAL  
method.

### Formulation

Lyophilized from a 0.2 μm filtered  
solution of 50 mM Glycine 50 mM  
NaCl pH4.0. Contact us for customized  
product form or formulation.

### Reconstitution

Reconstitute to a concentration of  
0.1-0.5 mg/mL in sterile distilled water.

## Background

This protein belongs a member of the transforming growth factor beta (TGFB) family of cytokines, which are multifunctional peptides that regulate proliferation, differentiation, adhesion, migration, and other functions in many cell types. Many cells have TGFB receptors, and the protein positively and negatively regulates many other growth factors. The secreted protein is cleaved into a latency-associated peptide (LAP) and a mature TGFB1 peptide, and is found in either a latent form composed of a TGFB1 homodimer, a LAP homodimer, and a latent TGFB1-binding protein, or in an active form composed of a TGFB1 homodimer. The mature peptide may also form heterodimers with other TGFB family members. This gene is frequently upregulated in tumor cells, and mutations in this gene result in Camurati-Engelmann disease.

## Basic Information

### Description

Recombinant Human TGF-beta 1/TGFB1 Protein is produced by Human Cell expression system. The target protein is expressed with sequence (Ala279-Ser390) of human TGF-beta 1/TGFB1 (Accession #P01137).

### Bio-Activity

### Storage

Store the lyophilized protein at -20°C to -80 °C for long term. After reconstitution, the protein solution is stable at -20 °C for 3 months, at 2-8 °C for up to 1 week.  
Avoid repeated freeze/thaw cycles.

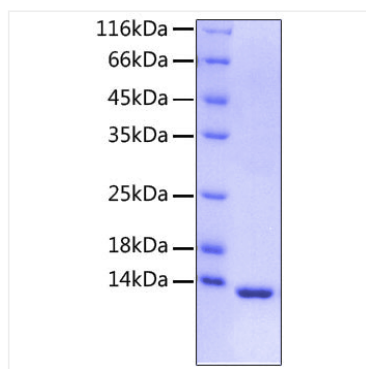
## Contact



[www.abclonal.com](http://www.abclonal.com)

## Validation Data

---



Recombinant protein Human TGF-beta 1/TGFB1 was determined by SDS-PAGE under reducing conditions with Coomassie Blue, showing a band at 13 kDa.